

CERTIFIED CORNER RECORDATION

Corner S 1/4 Cor Sec 8 T. 34N R. 25W P.M.M. Lincoln County

1. 1894 G.L.O. Original Record by A.L. Jaqueth

Set a Post, 3 ft. long, 3 ins. square, 24 ins. in the ground, for 1/4 Sec. corner.,
mkd. 1/4 S on N face;
From which:

- A Tamarack, 12 ins. in diam., bears S35°30'W, 50 lks. dist., mkd. 1/4 S BT;
- A Tamarack, 8 ins. in diam., bears N45°W, 54 lks. dist., mkd. 1/4 S BT.

1961 G.L.O. Remonumentation by Cunningham & Stephens:

The 1/4 sec. cor. of secs. 8 and 17, as determined from the remains of the original bearing trees;
Found:

- A Stump, 16 ins. in diam., bears S35 1/2°W, 50 lks. dist., "1/4 S" visible;
- A Fir, 12 ins. in diam., bears N48 3/4°W, 54 lks., dist., "1/4 S" visible;

Set:

- An Iron post, 2 1/2 ins. diam., 30 ins. long, 26 ins. in the ground, with
- A Brass cap mkd. as shown;
- A Larch, 6 ins. in diam., bears S6°W, 20 lks. dist., mkd. 1/4 S17 BT;
- A Larch, 10 ins. in diam., bears N22°W, 121 lks. dist., mkd. 1/4 S8 BT.

1994 by Alvah F. Hughes

Found:

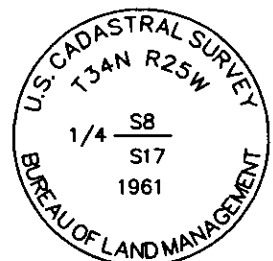
- A Aluminum Cap, 3 1/4 ins. in diam., on a 2 1/2 ins. diam. aluminum pipe, 12 ins. above ground, firmly set;
- A Larch stump, bears S35°W, 33.0 ft. dist., no visible marks (GLO record);
- A Larch, 9 ins. in diam., bears S6°W, 13.2 ft. dist., healed face (BLM record);
- A Larch, 12 ins. in diam., bears N22°W, 79.9 ft. dist., healed face (BLM record);
- A Fir snag, 13 ins. in diam., bears N45°W, 35.6 ft. dist., "1/4 BT" visible (GLO record=larch);

2. Found:

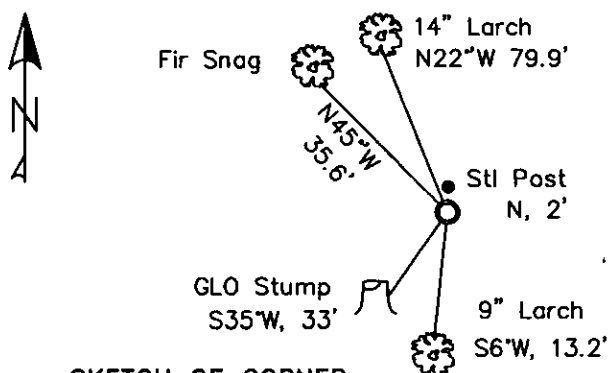
- A BLM Brass Cap, 3 1/4 ins. in diam., 0.1 ins. out of ground, mkd. as shown;
- A Larch, 9 ins. in diam., bears S06°W, 13.2 ft. dist., with healed face;
- A Larch, 14 ins. in diam., bears N22°W, 79.9 ft. dist., with healed face;
- A Larch Stump, bears S35°W, 33.0 ft. dist.;
- A Fir Snag, bears N45°W, 35.6 ft. dist.;

3. Placed:

- A Steel post with LSM sign, bears North, 2 ft. dist.;
- Set and painted a mound of rock around monument;
- Painted blazes and bands on all BTs; Replaced tags & signs as needed;



MAGNETIC DECLINATION - 15°4' EAST



SKETCH OF CORNER

CERTIFICATION

I, Erich Shrock
certify the information shown is true and correct.

LAWRENCE A. GLAHE
certify that this Corner Monument represents work
performed by me or under my direction in compliance with
the "Corner Recordation Act" (P.L. 86-121, et seq. (R.C.A.))

9748 LS

Dated 11-10-11 PA 9748 LS

Employer: GLAHE & ASSOC., INC.

Office of Clerk and Recorder, County of Lincoln. This "corner

record" was filed for recd.

229590 BOOK: CCR CC&R'S PAGE: 11575 Pages: 1

was noted on the cross-

STATE OF MONTANA LINCOLN COUNTY

RECORDED: 11/15/2010 11:02 KOI: CC&R'S

book No. _____

TAMMY D. LAUER CLERK AND RECORDER

FEE: \$0.00

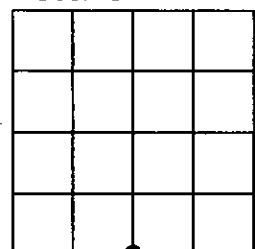
BY Jeannie Dennis Deputy

TO: GLAHE & ASSOC., INC. P.O. BOX 1863, SANDPOINT, ID. 83860,

Cross Index No. J-7 T. 34N R. 25W PMM

Adopted July 1, 1981, Montana Board of Professional Engineers & Land Surveyors

Sec. 8



● corner this sheet

1. *Chlorophyll a* and *Chlorophyll b* were determined by the method of Arar and Collins (1971).

the 1990s, the number of people in the world who are under 15 years of age is expected to increase by 1.5 billion, from 1.1 billion in 1990 to 2.6 billion in 2010. The number of people aged 65 and over is expected to increase by 1 billion, from 350 million in 1990 to 1.4 billion in 2010. The number of people aged 15-64 is expected to increase by 1.5 billion, from 2.5 billion in 1990 to 4.0 billion in 2010. The number of people aged 65 and over is expected to increase by 1 billion, from 350 million in 1990 to 1.4 billion in 2010. The number of people aged 15-64 is expected to increase by 1.5 billion, from 2.5 billion in 1990 to 4.0 billion in 2010.

the 1990s, the number of people in the world who are under 15 years of age is expected to increase by 1.5 billion, from 1.1 billion in 1990 to 2.6 billion in 2010. The number of people aged 65 and over is expected to increase by 1 billion, from 350 million in 1990 to 1.4 billion in 2010. The number of people aged 15-64 is expected to increase by 1.5 billion, from 2.5 billion in 1990 to 4.0 billion in 2010. The number of people aged 65 and over is expected to increase by 1 billion, from 350 million in 1990 to 1.4 billion in 2010. The number of people aged 15-64 is expected to increase by 1.5 billion, from 2.5 billion in 1990 to 4.0 billion in 2010.

[illegible][illegible]

100

1. *Journal of the American Medical Association*, 1997; 277: 1033-1036.

$\frac{1}{\sqrt{\pi}} \int_{-\infty}^{\infty} f(x) e^{-x^2} dx = \frac{1}{\sqrt{\pi}} \int_{-\infty}^{\infty} f(x) e^{-x^2} dx$

1. *Journal of the American Medical Association*, 1997; 277: 1033-1036.