

I:\CLIENTS\Department of State Lands\Sticker\Drawings\Corner Records.dwg

CERTIFIED CORNER RECORDATIONCorner N1/16 S36,T34N,R25W & S31,T34N,R24W T. 34N R. 25W P.M.M. LINCOLN CountyG.L.O. Record:

This interior section subdivisional corner was never set by G.L.O. or other original government survey, but its position can be calculated by dimensions shown on the official government plat for this township.

Subsequent Record:

Certificate of Survey No. 1614, Phil Helps, 4739S. Certificate shows that a 5/8" rebar with plastic ID cap was set at the corner position. Proportional methods used to establish the corner position were verified as correct.

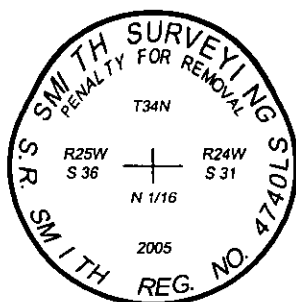
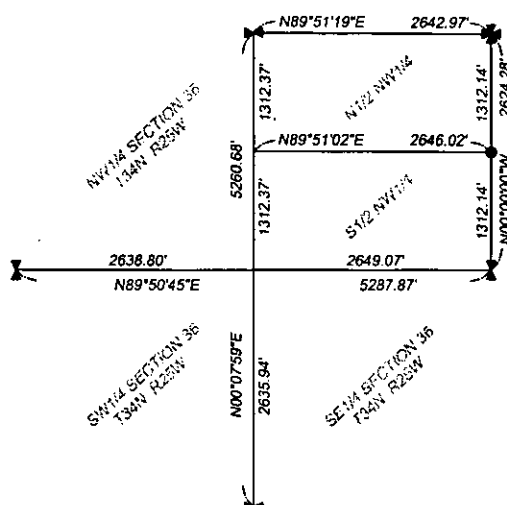
Evidence Found and New Monumentation Established:

At the calculated position for the corner, as established by proportionate measure and as shown on the attached section subdivisional diagram, I find a 5/8" diameter rebar with a yellow plastic cap stamped "Helps 4739S".

I replace the rebar and cap with a Berntsen flared base monument (model #A1NBF30), which consists of a 2-3/8" diameter by 30" long flared aluminum pipe with a magnet and 3-1/4" diameter aluminum cap attached to the top, stamped as shown in detail below. I bury the rebar inside the monument pipe. Corner falls in scree field at the base of a cliff. Raised a large stone mound around monument.

Section Subdivision

Section 36, Township 34 North, Range 25 West

**SKETCH OF CORNER****CERTIFICATION**

Michael R. Rice

I certify the information shown herein is true and correct.

Signature Ground-Party Chief

S. R. Smith

I certify that this Corner Record correctly represents work performed by me or under my direction in compliance with the "Corner Recordation Act" (70-22-101, et seq., M.C.A.).

Signature of Surveyor & Seal

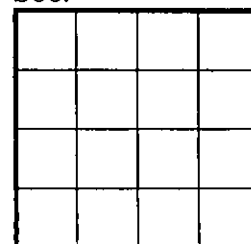
Date: 9/26/05 Reg. No. 4740LSEmployer: Smith Surveying & Consulting

Office of Clerk and Recorder, County of Lincoln, This "corner record" was filed for 190084 BOOK: CCR CC&R'S PAGE: 10885 Pages: 1 STATE OF MONTANA LINCOLN COUNTY was noted on the corner book No. 190084 RECORDED: 12/05/2005 2:08 KOI: CC&R'S CORAL M. CUMMINGS CLERK AND RECORDER FEE: \$0.00 BY: Deanna L. Linn Deputy TO: SMITH SURVEYING 1131 SOUTH MAIN, P.O. BOX 7323, KALISPELL, MT

Cross Index No. W-25 T. 34N R. 26W PMM

Adopted July 1, 1981, Montana Board of Professional Engineers & Land Surveyors

Sec. 36



●=corner this sheet

