

L:\CLIENTS\Department of State Lands\Sticker\Drawings\Corner Records.dwg

CERTIFIED CORNER RECORDATIONCorner C-N 1/16 Section 36 T. 34N R. 25W P.M.M. LINCOLN CountyG.L.O. Record:

This interior section subdivisional corner was never set by G.L.O. or other original government survey, but its position can be calculated by dimensions shown on the official government plat for this township.

Subsequent Record:

Certificate of Survey No. 1614, Phil Helps, 4739S. Certificate shows that a 5/8" rebar with plastic ID cap was set at the corner position. Proportional methods used to establish the corner position were verified as correct.

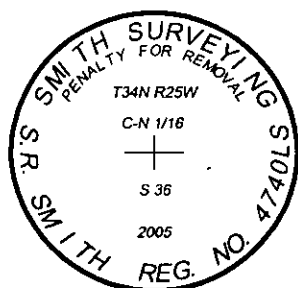
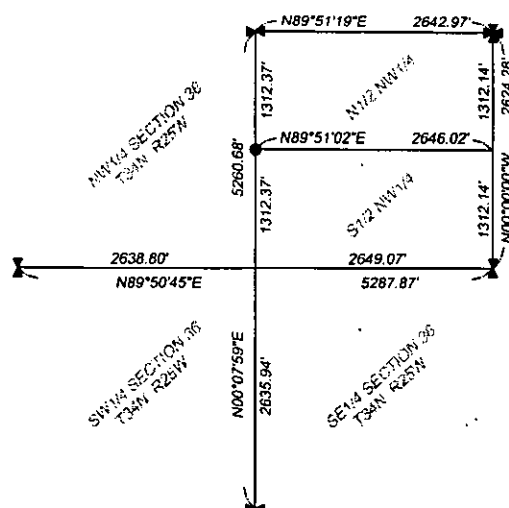
Evidence Found and New Monumentation Established:

At the calculated position for the corner, as established by proportionate measure and as shown on the attached section subdivisional diagram, I find a 5/8" diameter rebar with a yellow plastic cap stamped "Helps 4739S".

I replace the rebar and cap with a Berntsen flared base monument (model #A1NBF30), which consists of a 2-3/8" diameter by 30" long flared aluminum pipe with a magnet and 3-1/4" diameter aluminum cap attached to the top, stamped as shown in detail below. I bury the rebar inside the monument pipe. Top of installed monument is flush with ground.

Section Subdivision

Section 36, Township 34 North, Range 25 West

**CERTIFICATION**1. Michael R. Rice

certify the information shown herein to be true and correct.

Signature Ground Party Chief

1. S. R. Smith

certify that this Corner Record correctly represents work performed by me or under my direction in compliance with the "Corner Recordation Act" (70-22-101, et seq., M.C.A.)

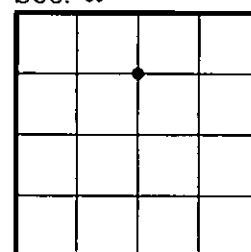
Signature of Surveyor & Seal

Date: 9/26/05 Reg. No. 4740LSEmployer: Smith Surveying & Consulting**SKETCH OF CORNER**

Office of Clerk and Recorder
 record" was filed for
 was noted on the cr
 book No. _____

190083 BOOK: CCR CC&R'S PAGE: 10884 Pages: 1
 STATE OF MONTANA LINCOLN COUNTY
 RECORDED: 12/05/2005 2:07 KOI: CC&R'S
 CORAL M. CUMMINGS CLERK AND RECORDER
 FEE: \$0.00 BY: Joennie Dennis Deputy
 TO: SMITH SURVEYING 1131 SOUTH MAIN, P.O. BOX 7323, KALISPELL, MT

Sec. 36



●=corner this sheet

Cross Index No. W-23 T. 34N R. 26W PMM

Adopted July 1, 1981, Montana Board of Professional Engineers & Land Surveyors

