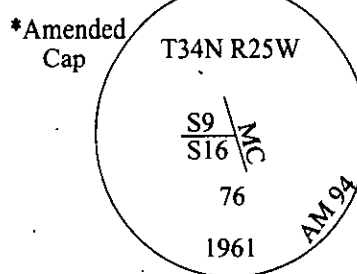
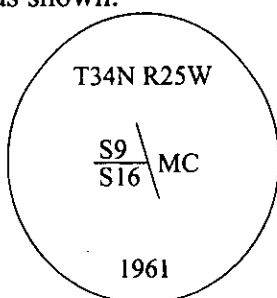


CERTIFIED CORNER RECORDATION

Corner MC Sec. 9 T. 34N R. 25W P.M., MT Lincoln County

I. 1894 G.L.O. Record by A.L. Jaqueth: Set a limestone, 12x8x6 ins., 8 ins. in the ground, for meander cor. to fractional secs. 9 and 16, mkd. "MC" on E. face and established two bearing trees.

1961 B.L.M. Remonumentation Record by W.E. Stephens: The meander cor. of secs. 9 and 16, on the W. bank of Dickey Lake, as determined from the remains of the original bearing trees. At the corner point, set an iron post, 30 ins. long, 2 1/2 ins. diam., 26 ins. in the ground, in concrete, with brass cap mkd. as shown.



Established one new bearing tree.

1976 B.L.M. Remonumentation Record by J.E. French: The meander cor. of secs. 9 and 16, on the W. bank of Dickey Lake, monumented with an iron post, and witnessed by the remains of the original bearing trees. Add the marks 1976 to the brass cap and establish one new bearing tree.

II. Found a 2 1/2 in. diam. iron pipe, in concrete, lying on the ground.

from which:

A fir, 16 ins. diam., bears S72°W, 14.5 ft. dist., with a healed face. (1976-record)

A fir, 8 ins. diam., bears N40°W, 19.8 ft. dist., with a healed face. (1961-record)

III. Due to bank erosion, I reset this corner as follows: Using the position of the original MC, as determined by a dist-dist intersect from found bearing trees, I establish by survey, the line between the N 1/4 of S16 and the MC to the E., and calculate a position on line 7.0 ft. West of original MC position. I reset the B.L.M. pipe and added "AM 94" to the cap as shown.

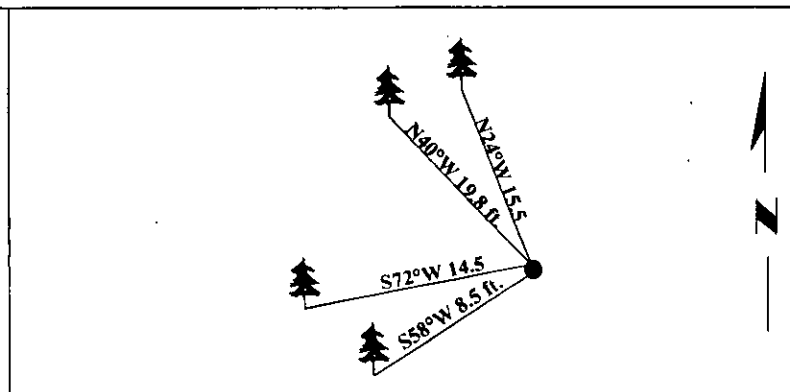
I used existing bearing trees and establish new bearings and distances:

A fir, 16 ins. diam., bears S58°W, 8.5 ft. dist., mkd. with a healed face.

A fir, 8 ins. diam., bears N24°W, 15.5 ft. dist., mkd. with a healed face.

Painted bearing trees and attached Land Survey Monument and Bearing Tree signs.

Magnetic Declination: 20° East

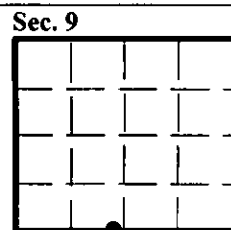


SKETCH OF CORNER

CERTIFICATION	
I, <u>Thomas M. Hommel</u>	certify the information shown herein is true and correct.
<i>[Signature]</i>	
I, <u>Alvah F. Hughes</u>	certify that this Corner Record correctly represents work performed by me or under my direction in compliance with the "Corner Recordation Act" (74-22-101, et seq., M.C.A.)
<i>[Signature]</i>	
Date: <u>11/18/98</u>	Signature of Surveyor & Seal
Reg. No.: <u>7322LS</u>	
Employer: <u>U.S. FOREST SERVICE</u>	

Office of Clerk and Recorder, County of Lincoln. This "corner record" was filed for record on 1-20-99 and was noted on the cross-index plat and is assigned page No. 10291 in book No. _____

Coral M. Cumming By DEB
County Official



● - corner this sheet



11857

11857