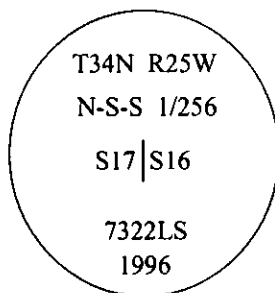


CERTIFIED CORNER RECORDATION

Corner N-S-S 1/256 Sec. 17 T. 34N R. 25 W P.M., MT Lincoln County

- I. No previous history.
- II. No evidence found.
- III. At the corner position as determined by survey, set a 30 in. long, 3/4 in. diam. alum. rod, 27 ins. in the ground, with a 3 1/4 in. diam. alum. cap, mkd. as shown:



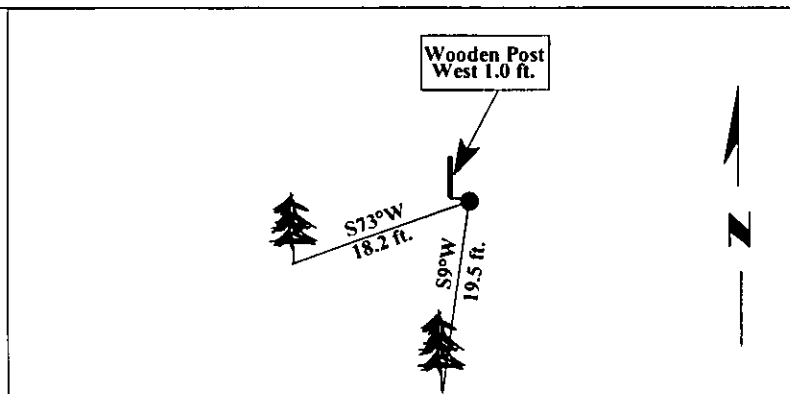
Established two bearing trees:

- A spruce, 9 ins. diam., bears S9°W, 19.5 ft. dist., scribed "X BT".
- A spruce, 9 ins. diam., bears S73°W, 18.2 ft. dist., scribed "S17 N-S-S 1/256 BT".

Painted bearing trees and attached Land Survey Monument and Bearing Tree signs.

Set a wooden post, 4 ft. long, 2 ins. square, West, 1.0 feet.

Magnetic Declination: 20° East.

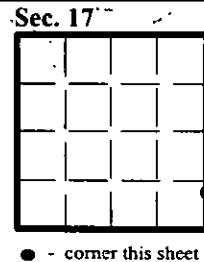


SKETCH OF CORNER

CERTIFICATION	
I. <u>Rex O. Rice</u>	certify the information shown herein is true and correct.
<u>Rex O. Rice</u>	
I. <u>Alvah F. Hughes</u>	certify that this Corner Record correctly represents work performed by me or under my direction in compliance with the "Corner Recordation Act" (70-22-401, M.C.A.)
<u>Alvah F. Hughes</u>	
Signature of Surveyor's Seal	
Date: <u>12/31/96</u>	
Reg. No.: <u>7322LS</u>	
Employer: <u>U.S. FOREST SERVICE</u>	

Office of Clerk and Recorder, County of Lincoln. This "corner record" was filed for record on 11-18-98 and was noted on the cross-index plat and is assigned page No. 10262 in book No. _____

Coral M. Cummins By Deb
County Official



• - corner this sheet

