

CERTIFIED LAND CORNER RECORDATION
(REFERENCE FSM 7153.53)

DESCRIPTION OF CORNER EVIDENCE FOUND, AND ORIGINAL RECORD (IF KNOWN)

1903 GLO RECORD: SET A GRANITE STONE, 15 X 10 X 4 INS., 10 INS. IN THE GROUND, FOR 1/4 SEC. COR.,
MRKD 1/4 ON N. FACE; FROM WHICH: A PINE, 12 INS. DIAM., BEARS N 41° E., 50 LKS
DIST. MARKED 1/4 S 33 BT., A FIR 10 INS. DIAM., BEARS S 58° E., 41 LKS. DIST.
MARKED 1/4 S 4 BT.

FOUND: A 12" X 7" X 4" STONE LYING ON TOP OF GROUND, IN INDENTATION, WITH 1/4" VISIBLE FACE UP
FROM WHICH: A 16" DOUG. FIR BEARS S 58° E., 27.0 FT, NO SCRIBING VISIBLE; A 12" STUMP BEARS N 52° E 23.0'
WITH 1/4 S 33" VISIBLE, THE 1/4 S 33 SCRIBING HAS CHOP MARKS OVER IT IN AN APPARENT ATTEMPT AT
OBLITERATION, ALSO A SMALL MOUND OF ORGANIC MATERIAL IS LOCATED N 41° E., 33 FT. DIST. (50 LKS)

CONCLUSION: AFTER AN ATTEMPT AT VARIOUS ALTERNATIVES, THE STONE MONUMENT LYING LOOSE, IN INDENTATION, AT
RECORD BEARING AND DISTANCE FROM "A CALLED" TREE, IS THE BEST EVIDENCE OF CORNER LOCATION.

DESCRIPTION OF MONUMENT AND ACCESSORIES ESTABLISHED
TO PERPETUATE THE ORIGINAL LOCATION OF THIS CORNER:

AT THE CORNER POINT FOR THE 1/4 33, AS MARKED BY THE ORIGINAL Date of work: 12-3/80
STONE MONUMENT AND WITNESSED BY THE REMAINS OF THE ORIGINAL BEARING TREES;

SET A 2 1/2" X 30" ALUMINUM PIPE APPROXIMATELY 23" IN GROUND WITH ALUM. CAP MARKED AS SHOWN.
SURROUND PIPE WITH A COLLAR OF STONE. ALSO, BURIED ORIGINAL STONE ALONGSIDE PIPE..

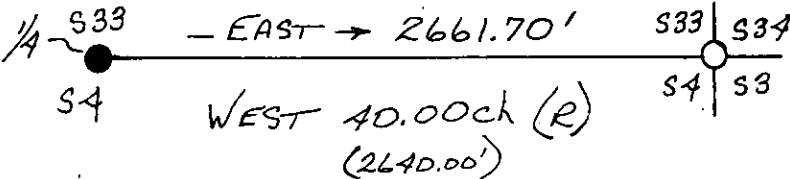
FROM WHICH: AN 8" DOUG. FIR BEARS N 49° W, 15.1' MRKD 1/4 S 33 BT"
A 9" DOUG. FIR BEARS S 32° W, 12.1' MRKD 1/4 S 4 BT"



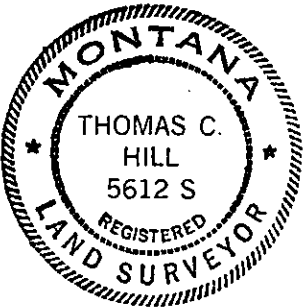
ATTACHED LOCATION POSTER TO A 6" PINE WHICH BEARS S 80° E, 7.1 FT.

SKETCH, WITH COURSE AND DISTANCE TO ADJACENT CORNERS IF DETERMINED IN THIS SURVEY.
(MAY SKETCH OR PASTE REPRODUCTION ON REVERSE SIDE.)

No Scale



Surveyor's Seal



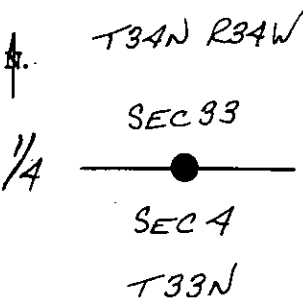
I, ANTHONY J. BACHMAN
certify that the information shown herein is true and
correct.

Anthony J. Bachman
Signature of Ground Party Chief

I, THOMAS C. HILL
certify that I have carefully performed or reviewed the
work done on the diagrammed corner as reported on this
recordation form and approve the same.

Thomas C. Hill
Signature of Surveyor

DIAGRAM OF CORNER:



= Corner recorded on the sheet

5612 S
Registration Number

Office of Clerk and Recorder, County of Lincoln

This "corner record" was filed for record on the 4th day of February 1981, was noted on the cross-index plat and is
assigned page No. 990, in book No. 1

Eleanor L. Vaughn, By Michele Caroom
County Official Deputy Mer.

Cross Index No. A-11 T. 33N R. 34W 34N