

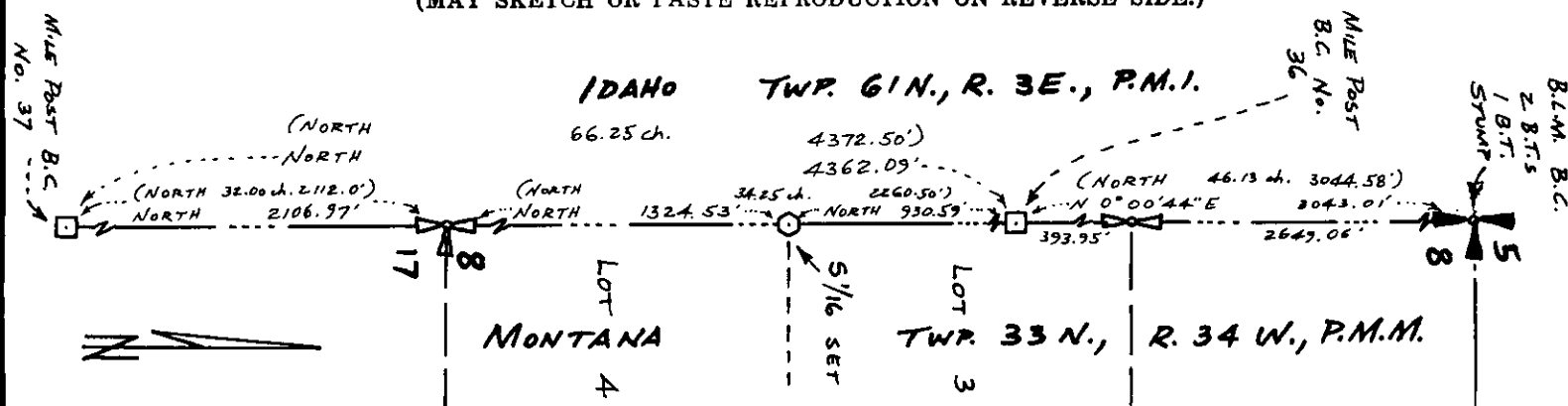
WEST BOUNDARY OF SECTION 8 TWP. 33 N., R. 34 W., P.M.M.

Corner not established on ground previously

Date of work: 9/2/80

S 1/16 S 1/16 on West boundary of
Idaho| S 8 Section 8 Twp. 33 N., R. 34 W., P.M.M.
Set 5/8" x 24" Steel Rod with Yellow Cap stamped: J.H.N. 4661 S.
10" Ponderosa Pine bears N 74°35' E 14.8 feet) Both posted & Scribed
28" Ponderosa Pine bears S 23°28' E 19.9 feet) S 1/16 B.T.

SKETCH, WITH COURSE AND DISTANCE TO ADJACENT CORNERS IF DETERMINED IN THIS SURVEY.
(MAY SKETCH OR PASTE REPRODUCTION ON REVERSE SIDE.)



David Stanley

I, _____
certify that the information shown herein is true and
correct. *P. J. ...*

Signature of Ground Party Chief

Jack H. Ninneman

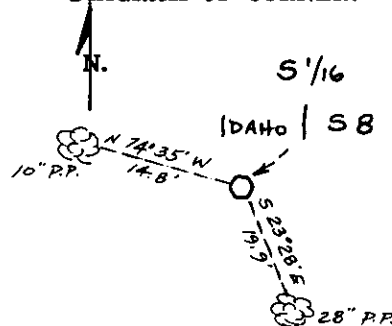
I, _____
certify that I have carefully performed or reviewed the
work done on the diagrammed corner as reported on this
recording form and approve the same.

Signature of Surveyor

4661 S.

.....
Registration Number

DIAGRAM OF CORNER:



○ = Corner recorded on the sheet

Office of Clerk and Recorder, County of.

This "corner record" was filed for record on the 2nd day of December, 1980, was noted on the cross-index plat, and is

assigned page No. 233, in book No. 1

County Official

Cross Index No. 5-H T 33N R 34W Mer.