

CERTIFIED LAND CORNER RECORDATION

SE CORNER OF LOT 2 OF SECTION 17 TWP. 33 N., R. 34 W. P.M.M.

DESCRIPTION OF CORNER EVIDENCE FOUND, AND ORIGINAL RECORD (IF KNOWN)

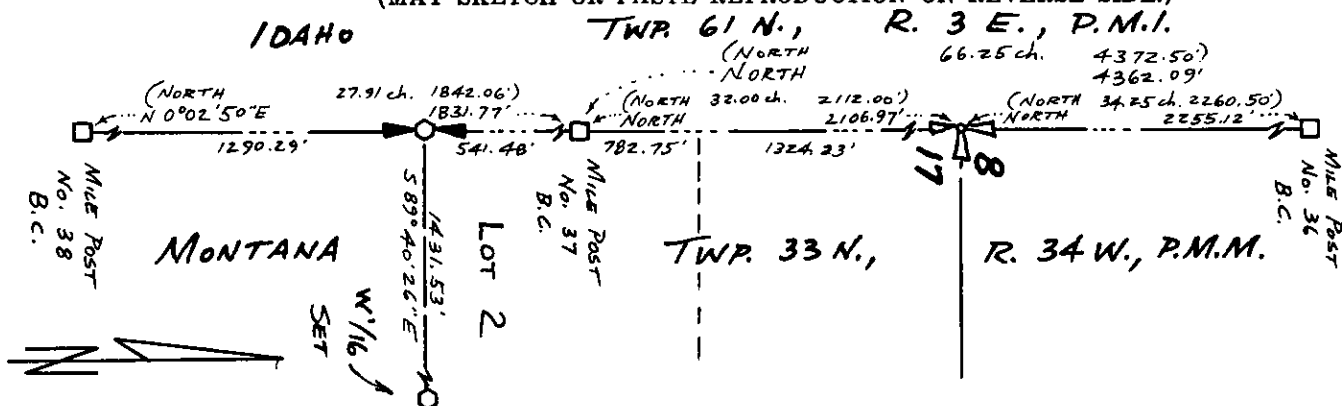
Corner not established on ground previously

DESCRIPTION OF MONUMENT AND ACCESSORIES ESTABLISHED TO PERPETUATE THE ORIGINAL LOCATION OF THIS CORNER:

Date of work: 9/9/80

W 1/16
C-C
S 17
Set 5/8"x24" Steel Rod with Yellow Cap stamped: J.H.N. 4661 S.
8" Fir bears S 23°37' W 14.5 feet) Both posted & Scribed
12" Cedar bears S 3°34' E 9.9 feet) W 1/16 S 17

SKETCH, WITH COURSE AND DISTANCE TO ADJACENT CORNERS IF DETERMINED IN THIS SURVEY.
(MAY SKETCH OR PASTE REPRODUCTION ON REVERSE SIDE.)



Surveyor's Seal

I, David Stanley
certify that the information shown herein is true and correct.

Signature of Ground Party Chief

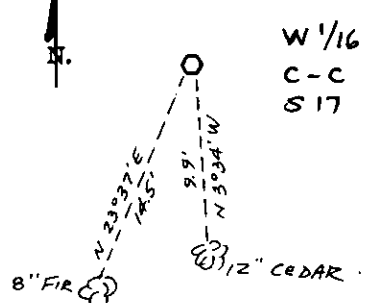
I, Jack H. Ninneman
certify that I have carefully performed or reviewed the work done on the diagrammed corner as reported on this recordation form and approve the same.

Signature of Surveyor

4661 S.

Registration Number

DIAGRAM OF CORNER:



○ = Corner recorded on the sheet

Office of Clerk and Recorder, County of Lincoln

This "corner record" was filed for record on the 2nd day of December, 1980, was noted on the cross-index plat and is assigned page No. 932, in book No. 1

Eleanor L. Tangle
County Official