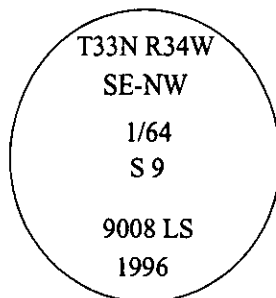


CERTIFIED CORNER RECORDATION

Corner SE-NW Sec. 9 T. 33 N R. 34 W P.M., MT Lincoln County
1/64

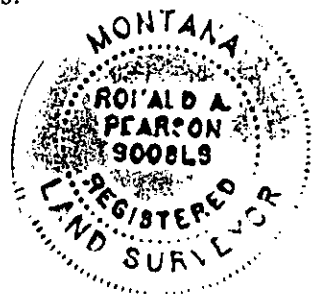
- I. No previous history.
- II. No evidence found.
- III. At the corner position, as determined by survey, set a 30 in. long, 1/2 in. diam. aluminum rod, 26 ins. in the ground, with a 3 1/4 in. diam. aluminum cap mkd. as shown:



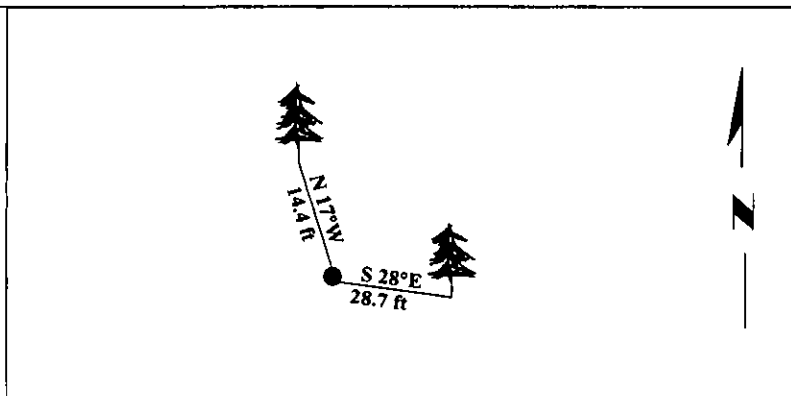
from which:

- A fir, 14 ins. diam., bears S82°E, 28.7 ft. dist., mkd. "SE-NW 1/64 S9 BT".
- A fir, 9 ins. diam., bears N17°W, 14.4 ft. dist., mkd. "SE-NW 1/64 S9 BT".

Painted bearing trees and attached Land Survey Monument and Bearing Tree signs.



Magnetic Declination: 20° East.

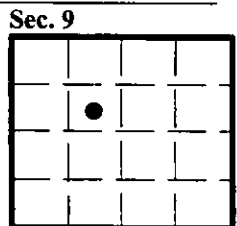


SKETCH OF CORNER

CERTIFICATION I, <u>REX O. RICE</u> certify the information shown herein is true and correct. <u>Rex O. Rice</u>	
I, <u>RONALD A. PEARSON</u> certify that this Corner Record correctly represents work performed by me or under my direction in compliance with the "Corner Recordation Act" (70-22-101, et seq., M.C.A.) <u>Ronald A. Pearson</u> Signature of Surveyor & Seal	
Date: <u>12/30/96</u>	
Reg. No.: <u>9008LS</u>	
Employer: <u>U.S. FOREST SERVICE</u>	

Office of Clerk and Recorder, County of LINCOLN. This "corner record" was filed for record on FEB 3, 1997 was noted on the cross-index plat and is assigned page No. 9077, in book No. _____

CORAL M. CUMMINGS
 County Official



● - corner this sheet