

CERTIFIED CORNER RECORDATION

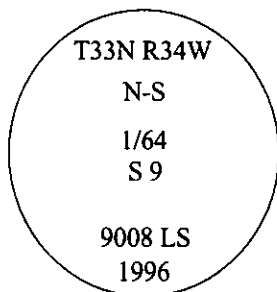
Corner N-S 1/64 Sec. 9 T. 33 N R. 34 W P.M., MT Lincoln County

- I. 1996 Plat No. 5742 By K.E.D. No. 4975S: Set a 5/8 in. rebar, with a plastic cap mkd. "KED 4975S".
- II. Found a 5/8 in. rebar, with a plastic cap mkd. "KED 4975S".

from which:

A larch, 10 ins. diam., bears S58°W, 14.8 ft. dist., mkd. "N-S 1/64 S9 BT".
A fir, 13 ins. diam., bears N33°W, 24.9 ft. dist., mkd. "N-S 1/64 S10 BT".

- III. At the corner position, as determined by the found rebar, set a 30 in. long, 2 1/2 in. diam. aluminum pipe, 24 ins. in the ground, with a 3 1/4 in. diam. aluminum cap mkd. as shown:

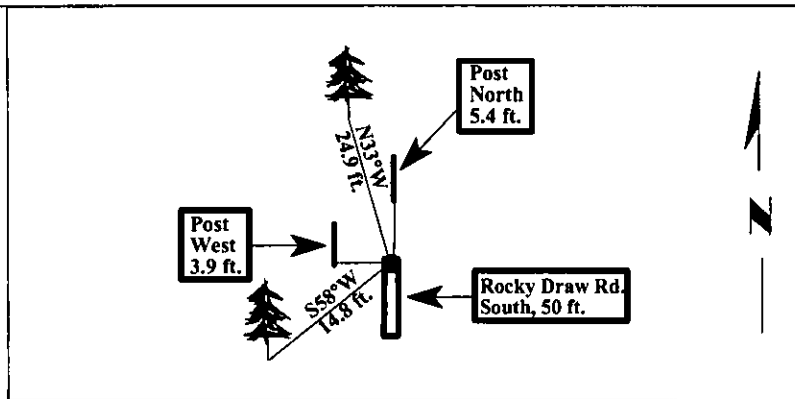
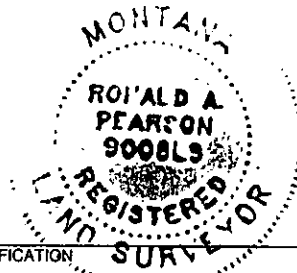


Placed the found rebar inside the aluminum pipe.

Set a steel guard post, West, 3.9 ft., with Land Survey Monument and Property Boundary decals.
Set a steel guard post, North, 5.4 ft., with Land Survey Monument and Property Boundary decals.

Painted bearing trees and attached Land Survey Monument and Bearing Tree signs.

Magnetic Declination: 20° East.



SKETCH OF CORNER

CERTIFICATION

I, JEFF A. HINTZ
certify the information shown herein is true and correct.

I, RONALD A. PEARSON
certify that this Corner Record correctly represents work performed by me or under my direction in compliance with the "Corner Recordation Act" (70-22-101, et seq., M.C.A.)

[Signature]
Signature of Surveyor & Seal

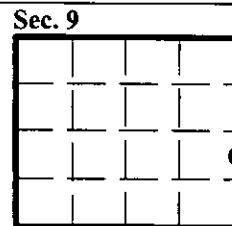
Date: 12/30/96

Reg. No.: 9008LS

Employer: U.S. FOREST SERVICE

Office of Clerk and Recorder, County of LINCOLN. This "corner record" was filed for record on FEB 3, 1997 was noted on the cross-index plat and is assigned page No. 9074, in book No. _____

CORAL M. CUMMINGS
County Official



● - corner this sheet