

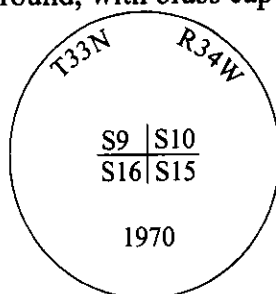
CERTIFIED CORNER RECORDATION

Corner N.W. Sec. 15 T. 33 N R. 34 W P.M., MT Lincoln County
Cor.

I. 1903 G.L.O. Original Record by Allen B. Benedict: Set a limestone, 15x12x8 ins., 10 ins. in the ground, mkd. with 4 notches on S. and 3 notches in E. edges.
from which:

- A pine, 50 ins. diam., bears N31°E, 37 lks. dist., mkd. "T33N R34W S10 BT".
- A pine, 34 ins. diam., bears S39°50'E, 30 lks. dist., mkd. "T33N R34W S15 BT".
- A pine, 20 ins. diam., bears S81°45'W, 104 lks. dist., mkd. "T33N R34W S16 BT".
- A pine, 18 ins. diam., bears N52°30'W, 45 lks. dist., mkd. "T33NR34W S9 BT".

1970 B.L.M. Remonumentation Record by Joseph E. French: The cor. of secs. 9,10,15&16, monu-
mented with a limestone, 15x12x8 ins., firmly set, mkd. with 4 notches on S. and 3 notches on the E.
edges and witnessed by the remains of the original bearing trees. At the corner point, set an iron post, 30
ins. long, 2 1/2 in. diam., 24 ins. the ground, with brass cap mkd. as shown:



Established four new bearing trees:

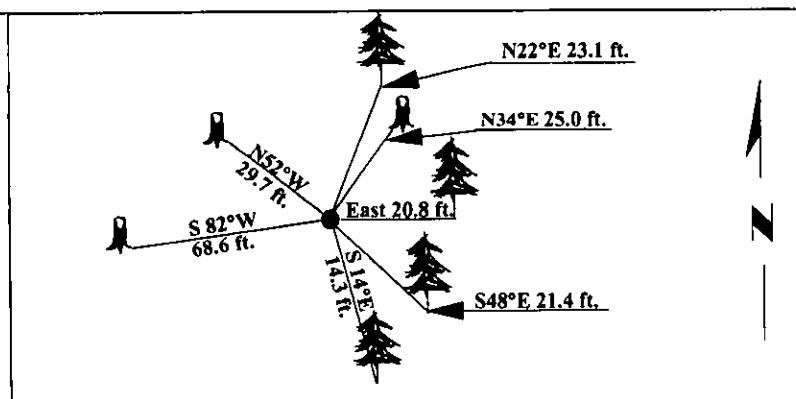
- A pine, 7ins. diam., bears N22 1/2°E, 35 lks. dist., mkd. "T33N R34W S10 BT".
- A fir, 6 ins. diam., bears S14 1/2°E, 22 lks. dist., mkd. "T33N R34W S15 BT".
- A pine, 8 ins. diam., bears S48 1/4°W, 33 lks. dist., mkd. "T33N R34W S16 BT".
- A pine, 7 ins. diam., bears N36 1/4°W, 27 lks. dist., mkd. "T33NR34W S9 BT".

Bury the original stone alongside the iron post.

II. Found a 2 1/2 in. diam. iron pipe, protruding 4 ins. above the ground, firmly set, with a 3 1/4 in.
diam. BLM brass cap mkd. as shown above.
from which:

- A pine, 12 ins. diam., bears N22°E, 23 .1 ft. dist., mkd. "T33N R34W S10 BT". (BLM-record)
- A pine stump, bears N34°E, 25.0 ft. dist., "BT" visible. (GLO-record N31°E, 37 lks.-"24.4 ft.")
- A fir, 8 ins. diam., bears S14°E, 14.3 ft. dist., mkd. with a healed face. (BLM-record)
- A pine, 28 ins. diam., bears East, 20.8 ft. dist., "33R 34W S15" visible. (GLO-record S39°50'E, 30 lks.-"19.8 ft.")
- A pine, 8 ins. diam., bears S48°E, 21.4 ft. dist., mkd. with visible. (BLM-record)
- A pine stump, bears S82°W, 68.6 ft. dist., burnt, no visible scribe. (GLO-record)

III. Painted bearing trees and attached Land Survey Monument and Bearing Tree signs.
Magnetic Declination: 20° East.



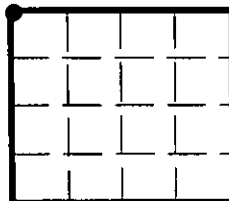
SKETCH OF CORNER

CERTIFICATION
I, THOMAS M. HOMMEL
certify the information shown herein is true and correct.
Ronald A. Pearson
I, RONALD A. PEARSON
certify that this Corner Record correctly represents work performed by me or under my
direction in compliance with the "Corner Recordation Act" (70-22-101, et seq., M.C.A.)
Signature of Surveyor & Seal
Date: 12/30/96
Reg. No.: 9008LS
Employer: U.S. FOREST SERVICE

Office of Clerk and Recorder, County of LINCOLN. This "corner record" was filed for record
on FEB 3, 1997 was noted on the cross-index plat and is assigned page No. 9073,
in book No. CORAL M. CUMMINGS By JTB

County Official

Sec. 15



● - corner this sheet

Cross Index No. J 13

T. 33N R. 34W P.M., MT