

# CERTIFIED CORNER RECORDATION

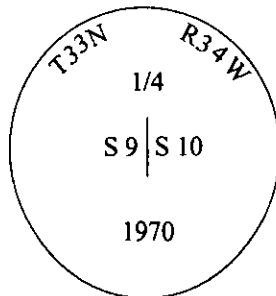
Corner E 1/4 Sec. 9 T. 33 N R. 34 W P.M., MT Lincoln County

- I. 1903 G.L.O. Original Record by Allen B. Benedict: Set a limestone, 15x12x10 ins., 10 ins. in the ground for 1/4 sec. cor. mkd. "1/4" on West face.

from which:

- A fir, 16 ins. diam., bears S81°15'E., 22 lks. dist., mkd. "1/4 S10 BT".  
A tamarack, 16 ins. diam., bears S36°W, 4 lks. dist., mkd. "1/4 S9 BT".

1970 B.L.M. Remonumentation Record by Joseph E. French: The 1/4 sec cor. of secs. 9 & 10, monumented with a limestone, 15x12x10 ins., firmly set, mkd. "1/4" on the West face, and witnessed by the remains of the original bearing trees. At the corner point, set an iron post 30 ins. long, 2 1/2 ins. diam., 24 ins. in the ground, with a 3 1/4 in. diam. BLM brass cap mkd. as shown:



Established two new bearing trees:

- A larch, 13 ins. diam., bears S45 1/4°E., 27 lks. dist., mkd. "1/4 S10 BT".  
A pine, 15 ins. diam., bears N16 1/4°W., 59 lks dist., mkd. "1/4 S9 BT".

Bury the original stone alongside the iron post

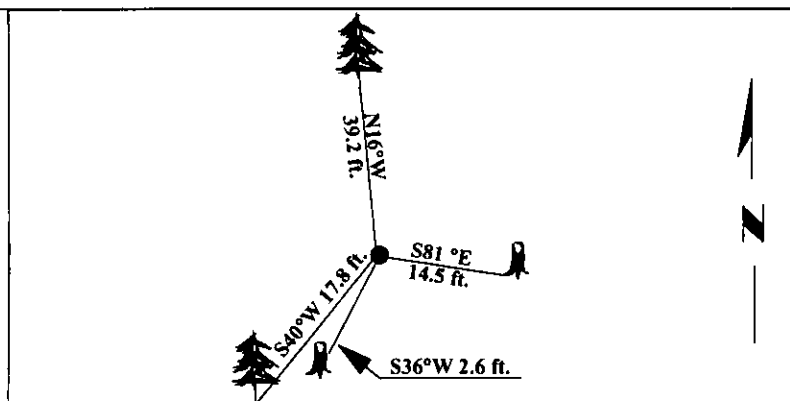
- II. Found a 2 in. diam. iron pipe, protruding 4 ins. above the ground, firmly set, with a 3 1/4 in. BLM brass cap mkd. as shown above.

from which:

- A fir stump, 24 ins. diam., bears S81°E., 14.5 ft. dist., with visible chop marks. (GLO-record)  
A larch stump, 18 ins. diam., bears S36°W., 2.6 ft. dist., mkd. with visible scribe. (GLO-record)  
A larch, 13 ins. diam., bears S40°W., 17.8 ft. dist., mkd. with a pitched face. (BLM-rec. S45 1/4°E)  
A pine, 24 ins. diam., bears N16°W, 39.2 ft. dist., mkd. with a healed face. (BLM-record 59 lks.- "38.9 ft.")

- III. Painted bearing trees and attached Land Survey Monument and Bearing Tree signs.

Magnetic Declination: 20° East.



SKETCH OF CORNER

I. THOMAS M. HOMMEL

certify the information shown herein is true and correct

I. RONALD A. PEARSON

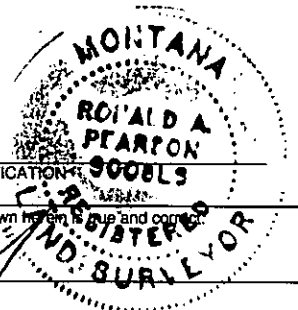
certify that this Corner Record correctly represents work performed by me or under my direction in compliance with the "Corner Recordation Act" (70-22-101, et seq., M.C.A.)

Signature of Surveyor & Seal

Date: 12/30/96

Reg. No.: 9008LS

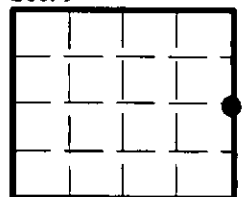
Employer: U.S. FOREST SERVICE



Office of Clerk and Recorder, County of LINCOLN. This "corner record" was filed for record on FEB 3, 1997 was noted on the cross-index plat and is assigned page No. 9072, in book No. \_\_\_\_\_

CORAL M. CUMMINGS  
County Official

Sec. 9



• - corner this sheet

Cross Index No. G -13 T. 33N R. 34W P.M., MT