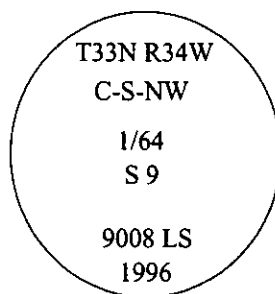


# CERTIFIED CORNER RECORDATION

Corner C-S-NW Sec. 9 T. 33 N R. 34 W P.M., MT Lincoln County  
1/64

- I. 1992 Certificate of Survey No. 1970 By J.R.S. No. 9958LS: Set a 30 in. long, 1/2 in. diam. rebar, with a red plastic cap mkd. "JRS 9958LS".
- II. Found a 30 in. long, 1/2 in. diam. rebar, with a red plastic cap mkd. "JRS 9958LS".
- III. At the corner position, as determined by the found rebar, set a 30 in. long, 2 1/2 in. diam. aluminum rod, 24 ins. in the ground, with a 3 1/4 in. diam. aluminum cap mkd. as shown:



from which:

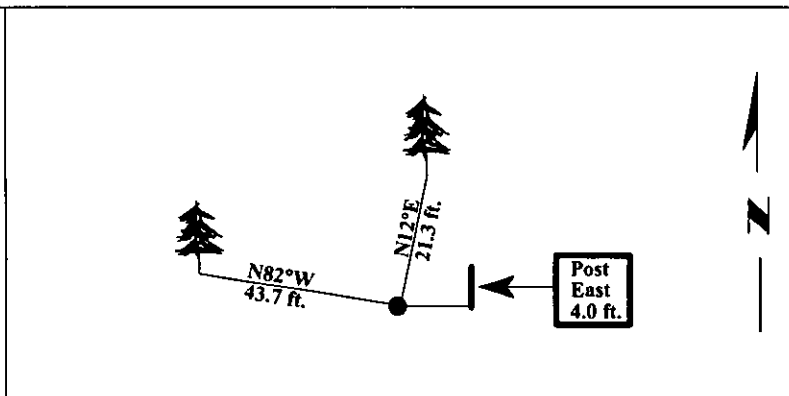
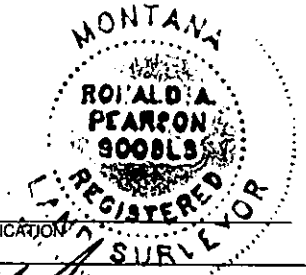
A larch, 15 ins. diam., bears N12°E, 21.3 ft. dist., mkd. "C-S-NW 1/64 S9 BT".  
A pine, 10 ins. diam., bears N82°E, 43.7 ft. dist., mkd. "C-S-NW 1/64 S9 BT".

Placed the found rebar inside the aluminum pipe.

Set a steel guard post, East, 4.0 ft., with Land Survey Monument and Property Boundary decals.

Painted bearing trees and attached Land Survey Monument and Bearing Tree signs.

Magnetic Declination: 20° East.

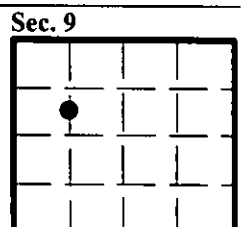


SKETCH OF CORNER

CERTIFICATION  
I, THOMAS M. HOMMEL  
*Thomas M. Hommel*  
I, RONALD A. PEARSON  
certify that this Corner Record correctly represents work performed by me or under my direction in compliance with the "Corner Recordation Act" (70-22-101, et seq., M.C.A.)  
*Ronald A. Pearson*  
Signature of Surveyor & Seal  
Date: 12/30/96  
Reg. No.: 9008LS  
Employer: U.S. FOREST SERVICE

Office of Clerk and Recorder, County of LINCOLN. This "corner record" was filed for record on FEB 3, 1997 was noted on the cross-index plat and is assigned page No. 9067, in book No. \_\_\_\_\_

CORAL M. CUMMINGS  
County Official



● - corner this sheet