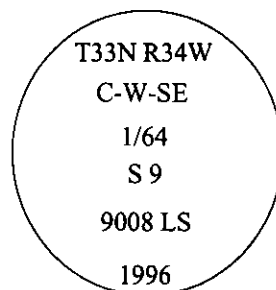


# CERTIFIED CORNER RECORDATION

Corner C-W-SE Sec. 9 T. 33 N R. 34 W P.M., MT Lincoln County  
1/64

- I. No previous history.
- II. No evidence found.
- III. At the corner position, as determined by survey, set a 30 in. long, 3/4 in. diam. driveable aluminum rod, 26 ins. in the ground, with a 3 1/4 in. diam. aluminum cap mkd. as shown:

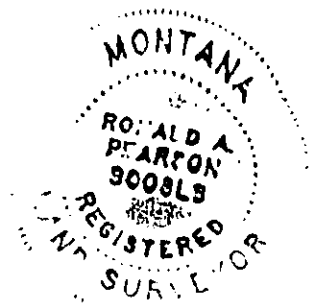


from which:

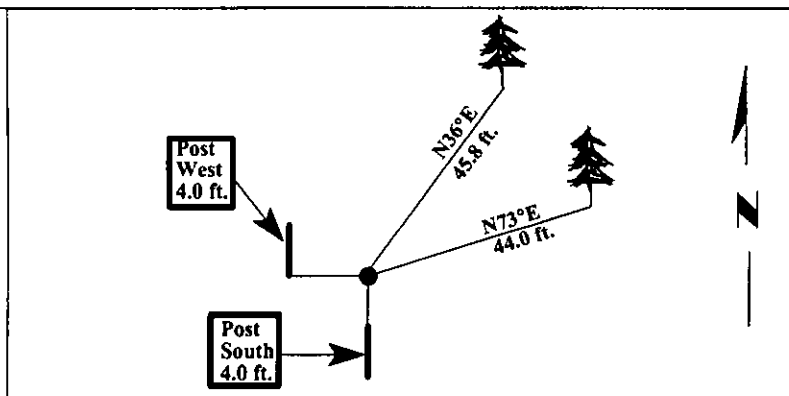
- A fir, 9 ins. diam., bears N73°E, 44.0 ft. dist., mkd. "C-W-SE 1/64 S9 BT".
- A larch, 10 ins. diam., bears N36°E, 45.8 ft. dist., mkd. "C-W-SE 1/64 S9 BT".

Set a 6 ft. steel guard post, South, 4.0 ft., with Land Survey Monument and Property Boundary decals.  
Set a 6 ft. steel guard post, West, 4.0 ft., with Land Survey Monument and Property Boundary decals.

Painted bearing trees and attached Land Survey Monument and Bearing Tree signs.



Magnetic Declination: 20° East.

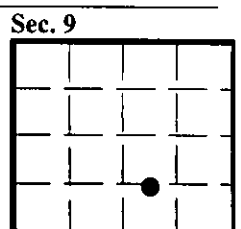


SKETCH OF CORNER

<p>CERTIFICATION</p> <p>I, <u>THOMAS M. HOMMEL</u> certify the information shown herein is true and correct.</p> <p><i>[Signature]</i></p> <p>I, <u>RONALD A. PEARSON</u> certify that this Corner Record correctly represents work performed by me or under my direction in compliance with the "Corner Recordation Act" (70-22-101, et seq., M.C.A.)</p> <p><i>[Signature]</i> Signature of Surveyor &amp; Seal</p> <p>Date: <u>12/30/96</u></p> <p>Reg. No.: <u>9008LS</u></p> <p>Employer: <u>U.S. FOREST SERVICE</u></p>	
---	--

Office of Clerk and Recorder, County of LINCOLN. This "corner record" was filed for record on FEB 3, 1997 was noted on the cross-index plat and is assigned page No. 9064, in book No. CORAL M. CUMMINGS *[Signature]*

County Official



● - corner this sheet