

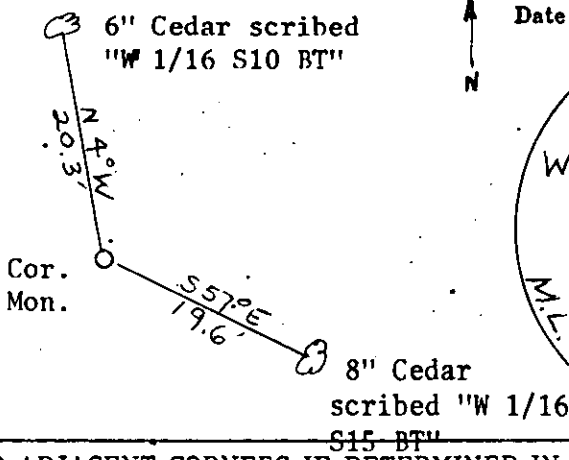
CERTIFIED LAND CORNER RECORDATION

DESCRIPTION OF CORNER EVIDENCE FOUND, AND ORIGINAL RECORD (IF KNOWN)

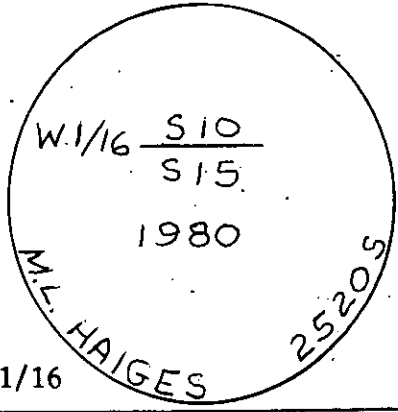
ORIGINAL G.L.O. NOTES: CORNER NEVER SET

DESCRIPTION OF MONUMENT AND ACCESSORIES ESTABLISHED TO PERPETUATE THE ORIGINAL LOCATION OF THIS CORNER:

This corner was set from the section breakdown as indicated on the back. Set 1 1/2" X 30" iron pipe with 2" brass cap. Marked as shown.



Date of work: March 1980



SKETCH, WITH COURSE AND DISTANCE TO ADJACENT CORNERS IF DETERMINED IN THIS SURVEY. (MAY SKETCH OR PASTE REPRODUCTION ON REVERSE SIDE.)

SEE BACK

Surveyor's Seal

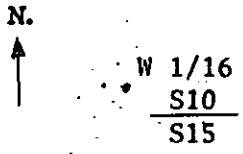
I, JAMES BURTON
certify that the information shown herein is true and correct.

James Burton
Signature of Ground Party Chief

I, M. L. HAIGES
certify that I have carefully performed or reviewed the work done on the diagrammed corner as reported on this recordation form and approve the same.

M. L. Haiges
Signature of Surveyor

DIAGRAM OF CORNER:
T33N R34W



= Corner recorded on the sheet

2520S
Registration Number

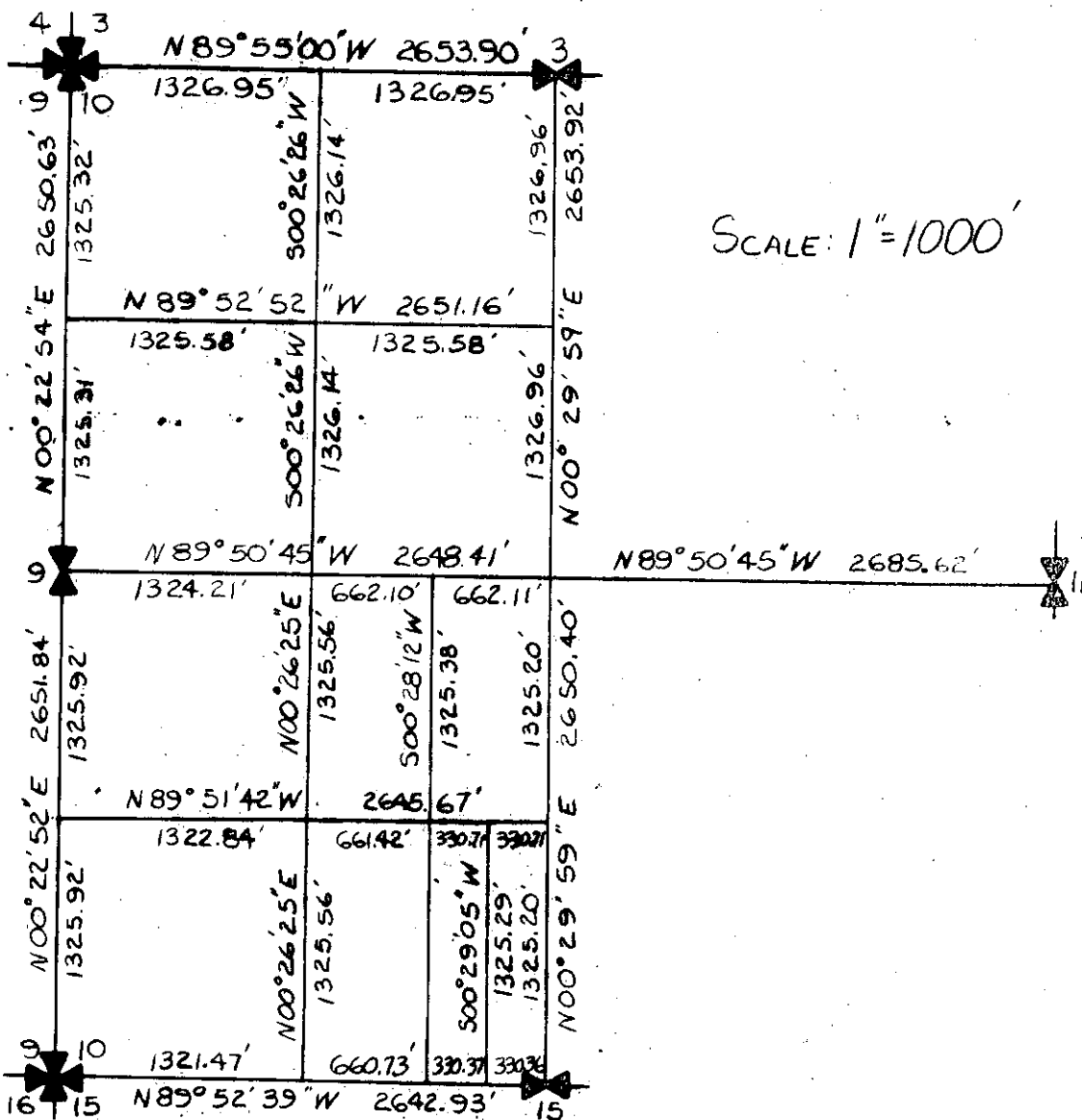
Office of Clerk and Recorder, County of Lincoln

This "corner record" was filed for record on the 17th day of July 1980, was noted on the cross-index plat and assigned page No. 862, in book No. _____

County Official *James L. Tauler by Betty Seale*

Form 123 - 43227 Cross Index No. 514 T. 33 R. 34 Mer.

SECTION 10 BREAKDOWN



THIS IS
SECTION
ON THE
EAST
AS SHOWN