

CERTIFIED LAND CORNER RECORDATION

DESCRIPTION OF CORNER EVIDENCE FOUND, AND ORIGINAL RECORD (IF KNOWN)

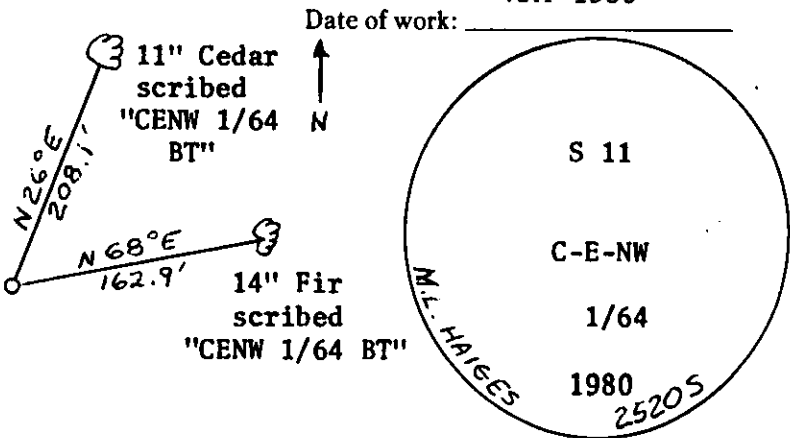
ORIGINAL G.L.O. NOTES: "To point for 1/64 sec. cor. identical with listing corner No. 10, marked and witnessed as described by the District Forester. I destroy the listing corner and its accessories, and in its place establish Cor. 7 of this survey as follows:  
Place a small stone marked with a cross (x) under a quartzite stone 28 x 10 x 8 ins., 18 ins. in the ground, marked 7 HES 1238 on the NW. and 1/64 S.11 on the N. faces, and a cross (x) on the top for the exact corner point, from which  
A cross (x) on an Alpine tree 6 ins. dia. bears N48°18'E., 211 lks. dist.,  
A cross(x) on a cedar tree 40 ins., dia. bears N.87°20'W., 127 lks. dist., each blazed and scribed 7 HES 1238 1/64 S11 BT."

FOUND: FOUND ORIGINAL STONE IN PLACE

DESCRIPTION OF MONUMENT AND ACCESSORIES ESTABLISHED TO PERPETUATE THE ORIGINAL LOCATION OF THIS CORNER:

MAY 1980

Set 2 1/4" X 30" Aluminum monument with 3/4" cap. Marked as shown. Buried original stone alongside.



SKETCH, WITH COURSE AND DISTANCE TO ADJACENT CORNERS IF DETERMINED IN THIS SURVEY. (MAY SKETCH OR PASTE REPRODUCTION ON REVERSE SIDE.)

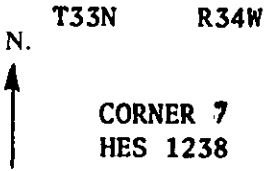
SEE BACK

Surveyor's Seal

I, JAMES BURTON  
certify that the information shown herein is true and correct.  
James Burton  
Signature of Ground Party Chief

I, M. L. HAIGES  
certify that I have carefully ~~performed~~ reviewed the work done on the diagrammed corner as reported on this recordation form and approve the same.  
M. L. Haiges  
Signature of Surveyor  
2520 S  
Registration Number

DIAGRAM OF CORNER:



= Corner recorded on the sheet

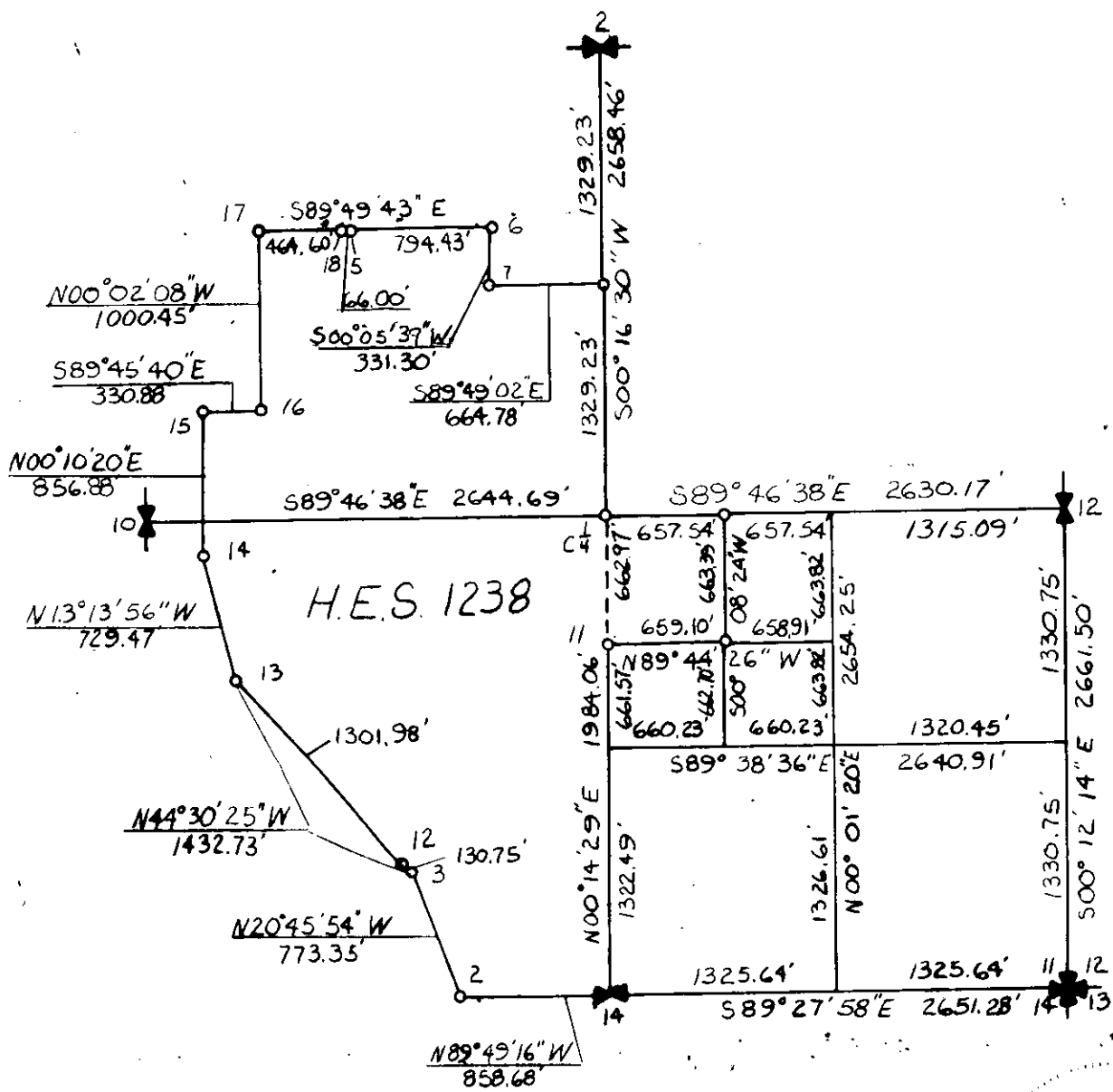
Office of Clerk and Recorder, County of Lincoln

This "corner record" was filed for record on the 17th day of July, 1980, was noted on the cross-index plat and is assigned page No. 828, in book No. \_\_\_\_\_

Deborah L. Vaughan, by Betty Sue,  
County Official Deputy

The following is a description of the land described in the above-mentioned plat, and the same is hereby confirmed and its location and extent is hereby established. The survey was made by the undersigned on the 15th day of May, 1938, and the same is hereby confirmed and its location and extent is hereby established. The survey was made by the undersigned on the 15th day of May, 1938, and the same is hereby confirmed and its location and extent is hereby established.

## SECTION II BREAKDOWN AND H.E.S. 1238



= Boundary