

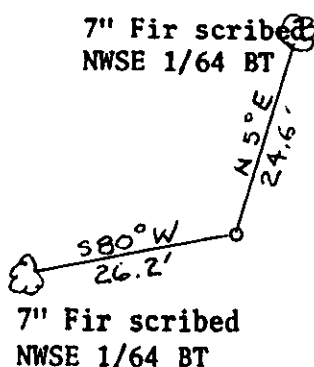
# CERTIFIED LAND CORNER RECORDATION

## DESCRIPTION OF CORNER EVIDENCE FOUND, AND ORIGINAL RECORD (IF KNOWN)

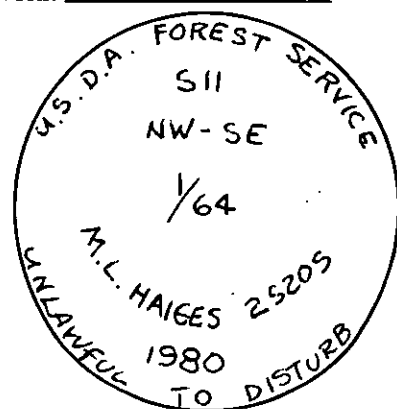
ORIGINAL G.L.O. NOTES: CORNER NEVER SET

## DESCRIPTION OF MONUMENT AND ACCESSORIES ESTABLISHED TO PERPETUATE THE ORIGINAL LOCATION OF THIS CORNER:

This corner was set from the section breakdown as indicated on the back. Set 2 1/4" X 30" Aluminum monument with 3 1/4" cap. Marked as shown



Date of work: MAY 1980



SKETCH, WITH COURSE AND DISTANCE TO ADJACENT CORNERS IF DETERMINED IN THIS SURVEY.  
(MAY SKETCH OR PASTE REPRODUCTION ON REVERSE SIDE.)

SEE BACK

Surveyor's Seal

I, JAMES BURTON  
certify that the information shown herein is true and correct.

*James Burton*

Signature of Ground Party Chief

I, M. L. HAIGES  
certify that I have carefully ~~performed~~ or reviewed the work done on the diagrammed corner as reported on this recordation form and approve the same.

*M. L. Haiges*

Signature of Surveyor

25205

Registration Number

DIAGRAM OF CORNER:

T33N R34W

N.



NW-SE

1/64

SEC. 11

= Corner recorded on the sheet

Office of Clerk and Recorder, County of Linn

This "corner record" was filed for record on the 17th day of July, 1980, was noted on the cross-index plat and is

assigned page No. 824, in book No. \_\_\_\_\_

*Cleaner L. Vaughan by Betty Bell*  
County Official *Deputy*

Cross Index No. G18 T 33 R 34 Mer.

## TOP SECRET FRODO      REF ID: A66564

