

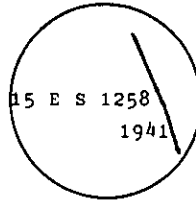
## INSTRUCTIONS

1. Original and/or subsequent record used to evaluate the corner position.
2. Description of evidence found, note discrepancies in the record, state method of establishing lost or obliterated corners.
3. Description of monument and accessories set to perpetuate the corner position.
4. Sketch of corner, show all pertinent data which can best be shown in a sketch example, corner marking, topography (ies), position of accessories, etc.
5. Certification must be signed and sealed by Land Surveyor registered in the State of Montana.
6. Fill in Cross Index & Section Diagram at bottom of sheet.

## CERTIFIED CORNER RECORDATION

Corner 15 of ES 1258 T. 33 N. R. 34 W. P.M.M. Lincoln County

- I. 1941 U.S.D.A. P.S. Exchange Survey No. 1258 by Donald Sawhill: "Set an iron post, 3 ft. long, 2 in. diam., 26 ins. in the ground, with granite stone 6 x 4 x 3 ins., marked with a cross (x) deposited at the base, with a brass cap marked:



The point on the brass cap is the exact cor. point from which

A cross (x) on a white fir, 10 ins. diam., bears N69°10'W, 28 lks. dist.

A cross (x) on a Douglas fir, 8 ins. diam., bears S15°26'W, 57 lks. dist., each blazed and scribed 15 E S 1258 B T.

Raise a mound of earth 4 ft. base, 2 ft. high, W. of corner."

- II. Found a 2 in. diam. iron pipe, bent over and out of position, with brass cap missing.

Original bearing trees with visible scribing and healed faces located.

- III. I set a 2 1/2 in. diam. by 30 in. long aluminum pipe, 26 ins. in the ground, by distance - distance intersect from the original bearing trees, with a 3 1/4 in. diam. aluminum cap marked as shown below:



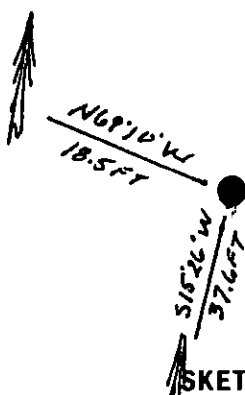
A fir, 14 ins. diam., bears N69°10' W, 18.5 ft. dist., mkd. 15 ES 1258 BT.

A fir, 12 ins. diam., bears S15°26' W, 37.6 ft. dist., mkd. 15 ES 1258 BT.

Painted red bands around the bearing trees and attached Land Survey Monument and Bearing Tree signs.

Set a 6 ft. galvanized steel guard post with Land Survey Marker and Property Boundary decals, N21°W, 3 ft.

Magnetic Declination: 20° East



SKETCH OF CORNER

## CERTIFICATION

Thomas M. Hommel

I, certify the information shown herein is true and correct.

Signature Ground Party Chief

Alvah F. Hughes

I, certify that this Corner Record correctly represents work performed by me or under my direction in compliance with the "Corner Recordation Act" (70-22-101, et seq., M.C.A.)

Signature of Surveyor & Seal

Date: 12/17/93

Reg. No. 7322LS

U.S. FOREST SERVICE

Employer:

Office of Clerk and Recorder, County of Lincoln. This "corner record" was filed for record on Jan 12, 1994 was noted on the cross-index plat and is assigned page No. 6111, in book No. Coral M. Cummings by OS.

County Official

15 ES 1258

33 N

34 W

Cross Index No. T. R. PMM

Sec. 21

Cor 15

• - corner this sheet