

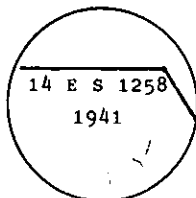
## INSTRUCTIONS

1. Original and/or subsequent record used to evaluate the corner position.
2. Description of evidence found, note discrepancies in the record, state method of establishing lost or obliterated corners.
3. Description of monument and accessories set to perpetuate the corner position.
4. Sketch of corner, show all pertinent data which can best be shown in a sketch example, corner marking, topography ties, position of accessories, etc.
5. Certification must be signed and sealed by Land Surveyor registered in the State of Montana.
6. Fill in Cross Index & Section Diagram at bottom of sheet.

## CERTIFIED CORNER RECORDATION

Corner 14 of ES 1258 T. 33 N. R. 34 W. P.M.M. Lincoln County

- I. 1941 U.S.D.A. F.S. Exchange Survey No. 1258 by Donald Sawhill: "Set an iron post, 3 ft. long, 2 in. diam., 26 ins. in the ground, with glass deposited at the base, with brass cap marked



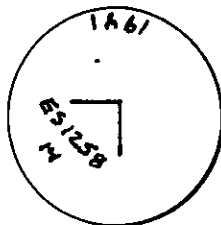
The point on the brass cap is the exact cor. point from which

A cross (x) on a fir, 7 ins. diam., bears S25°25'E, 28 lks. dist.

A cross (x) on a fir, 7 ins. diam., bears S53°45'W, 25 lks. dist., each blazed and scribed 14 E S 1258 B T.

Raise a mound of earth 4 ft. base, 2 ft. high, S.W. of corner."

- II. Found a 2 in. diam. iron pipe, 8 ins. above ground with 2 1/2 ins. diam. U.S.F.S. brass cap, marked as shown:



A down fir, 8 ins. diam., S25°E, 18.5 ft. mkd. 14 ES 1258 BT.

A fir, 18 ins. diam., S60°W, 16.5 ft. healed face. (Record S54°W)

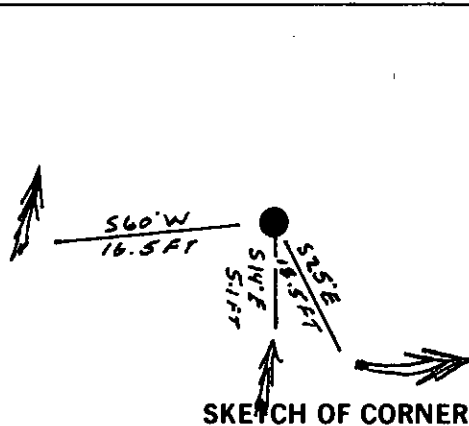
- III. Established one new bearing trees:

A hemlock, 5 ins. diam., bears S14°E, 5.1 ft. dist., mkd. X- BT.

Painted red bands around the bearing trees and attached Land Survey Monument and Bearing Tree signs.

Set a 6 ft. galvanized steel guard post with Land Survey Marker and Property Boundary decals, West, 3 ft.

Magnetic Declination: 20° East



SKETCH OF CORNER

## CERTIFICATION

Thomas M. Hommel

I, Thomas M. Hommel certify the information shown herein is true and correct.

Signature Ground Party Chief

Alvah P. Hughes

I, Alvah P. Hughes certify that this Corner Record correctly represents work performed by me or under my direction in compliance with the "Corner Recordation Act" (70-22-101, et seq. M.C.A.)

Signature of Surveyor & Seal

Date: 12/17/93 Reg. No. 7322LS

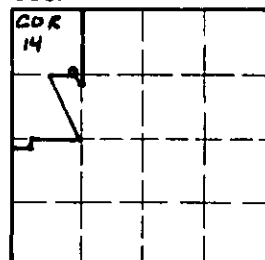
Employer: U. S. FOREST SERVICE

Office of Clerk and Recorder, County of Lincoln. This "corner record" was filed for record on Jan 12, 1994 was noted on the cross-index plat and is assigned page No. 6110, in book No. Coral M. Cumming & Co

County Official

Cross Index No. 14 ES 1258 T. 33 N R. 34 W PMM

Sec. 21



• - corner this sheet