

INSTRUCTIONS

1. Original and/or subsequent record used to evaluate the corner position.
2. Description of evidence found, note discrepancies in the record, state method of establishing lost or obliterated corners.
3. Description of monument and accessories set to perpetuate the corner position.
4. Sketch of corner, show all pertinent data which can best be shown in a sketch example, corner marking, topography ties, position of accessories, etc.
5. Certification must be signed and sealed by Land Surveyor registered in the State of Montana.
6. Fill in Cross Index & Section Diagram at bottom of sheet.

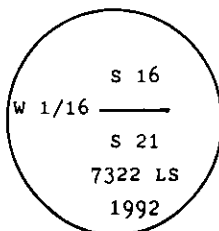
CERTIFIED CORNER RECORDATION

Corner W 1/16 cor. of Secs. 16 & 21 T. 33 N. R. 34 W. P.M.M. Lincoln County

I. No records found at Lincoln County Courthouse.

II. No evidence found on the ground.

III. At the cor. as position determined by survey, set a 3/4 in. diam. X 30 in. long driveable aluminum rod flush with the ground, with a 3 1/4 in. diam. alum. cap mkd. as shown:



from which

A pine, 10 ins. diam., bears N 54° E, 47.9 ft. dist., mkd. W 1/16 S 16 BT.

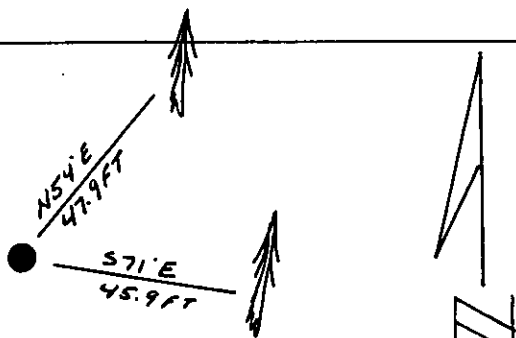
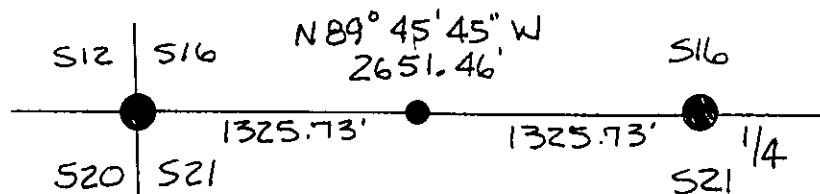
A fir, 7 ins. diam., bears S 71° E, 45.9 ft. dist., mkd. W 1/16 S 21 BT.

Set a 6 ft. galvanized steel guard post with Survey Marker and Property Boundary decals attached, West, 3ft.

Painted red bands around each bearing tree and attached Land Survey Monument and Bearing Tree signs.

Magnetic Declination: 20° East

GLO - WEST - 40.0 chs.

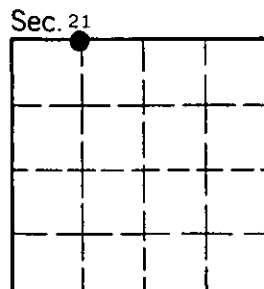


SKETCH OF CORNER

CERTIFICATION

I, Kenneth R. Kern
 certify the information shown herein is true and correct.
Kenneth R. Kern
 Signature Ground Party Chief
 I, Alvah F. Hughes
 certify that this Corner Record correctly represents work performed
 by me or under my direction in compliance with the "Corner
 Recordation Act" (70-22-101, et seq., M.C.A.)
Alvah F. Hughes
 Signature of Surveyor & Seal
 Date: 12/17/93 Reg. No. 7322LS
 Employer: U.S. FOREST SERVICE

Office of Clerk and Recorder, County of Lincoln. This "corner
 record" was filed for record on Jan 12, 1994
 was noted on the cross-index plat and is assigned page No. 6109, in
 book No. _____
Coral M. Cummings
 County Official



Cross Index No. N-10 T. 33 N R. 34 W P.M.M.

• - corner this sheet