

- INSTRUCTIONS**
1. Original and/or duplicate record used to evaluate the corner position.
 2. Description of evidence found, note discrepancies in the record, state method of establishing lost or obliterated corners.
 3. Description of monument and accessories set to perpetuate the corner position.
 4. Sketch of corner, show all pertinent data which can best be shown in a sketch example, corner marking, topography lies, position of accessories, etc.
 5. Certification must be signed and sealed by Land Surveyor registered in the State of Montana.
 6. Fill in Cross Index & Section Diagram at bottom of sheet.

CERTIFIED CORNER RECORDATION

Corner NW 1/16 Section 17 T. 33 N R. 34 W P.M.M. Lincoln County

RECORD:

No other corner of record was set.

FOUND:

No monuments were found during field search.

MAINTENANCE:

The NW 1/16 of Sec. 17, T. 33 N., R. 34 W., was set by computed location from a sec. breakdown of Sec. 17, T. 33 N., R. 34 W., P.M.M., by Davis Surveying on record in the Lincoln County Courthouse.

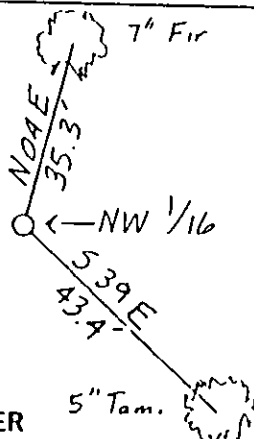
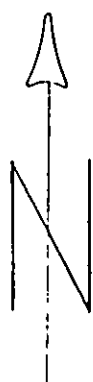
At the calculated position, set a 5/8 inch diam. by 24 inch long rebar with a 1 1/4 inch diam. plastic cap stamped: KED 4975S 21 ins. in the ground.

We established two (2) Bearing Trees described as follows:

A 5 inch diam. Tamarack bears S. 39° E. 43.4 ft. dist. scribed (NW 1/16 S. 17 BT).

A 7 inch diam. Fir bears N. 04° E. 35.3 ft. dist. scribed (NW 1/16 S. 17 BT).

Attached Bearing Tree signs to both trees.



SKETCH OF CORNER

CERTIFICATION

I, Glenn M. Knodle

certify the information shown herein is true and correct.

Glenn M. Knodle
Signature Ground Party Chief

I, Ken E. Davis

certify that this Corner Record correctly represents work performed by me or under my direction in compliance with the "Corner Recordation Act" (170-22-101, et seq., M.C.A.)

Ken E. Davis
Signature of Surveyor & Seal

Date: 12-16-93 Rec. No. 4975-S

Employer: _____

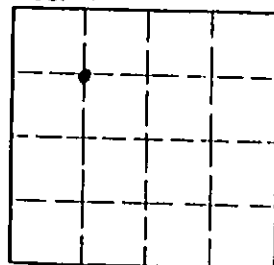
Office of Clerk and Recorder, County of Lincoln. This "corner record" was filed for record on 12-16-93 was noted on the cross-index plat and is assigned page No. 6010, in book No. _____

County Official

K-06

Cross Index No. NW 1/16 T. 33N R. 34W P.M.M.

Sec. 17



• - corner this sheet