

INSTRUCTIONS

1. Original and/or subsequent record used to evaluate the corner position.
2. Description of evidence found, note discrepancies in the record, state method of establishing lost or obliterated corners.
3. Description of monument and accessories set to perpetuate the corner position.
4. Sketch of corner, show all pertinent data which can best be shown in a sketch example, corner marking, topography ties, position of accessories, etc.
5. Certification must be signed and sealed by Land Surveyor registered in the State of Montana.
6. Fill in Cross Index & Section Diagram at bottom of sheet.

CERTIFIED CORNER RECORDATION

Corner of Secs. 16, 17, 20, & 21 T. 33 N. R. 34 W. P.M.M. Lincoln County

I. 1903 G.L.O. record by Allen B. Benedict: Set a wood post monument and four bearing trees.

1941 U.S.D.A. F.S. Exchange Survey No. 1258 record by Donald Sawhill: Remonuments position form one remaining bearing tree; set an iron post with brass cap and marked one new bearing tree.

1968 B.L.M. remonumentation record by Woodrow E. Damm et al: "The cor. of secs. 16, 17, 20 and 21, monumented with an iron post, 2 ins. diam., firmly set with brass cap protruding 10 ins. above the surface of the ground, and witnessed by the remains of the original NE. bearing tree. There is no official record of this iron post monument. Add additional marks 1968 to bottom of brass cap. Brass cap mkd.

T33N
S17 | S16
S20 | S21
R34W
1941
1968

from which:

The original bearing tree:

A rotted stump, bears N43 1/4° E, 55 lks. dist., mkd. BT. (Record)

The new bearing trees:

A spruce, 12 ins. diam., bears N4 1/4° E, 68 lks. dist., mkd. T33N R34W S16 BT.

A spruce, 9 ins. diam., bears S78° E, 107 lks. dist., mkd. T33N R34W S21 BT.

II. Found a 2 ins. diam. iron pipe, 15 ins. above the ground, firmly set with 2 1/2 ins. diam., B.L.M. brass cap, marked as shown:

R34W T33N
S17 | S16
S20 | S21
193

from which

A spruce stump, 13 ins. diam., bears N4° E, 44.8 ft. (68 lks.) dist., mkd. T33N R34W S16 BT.

A spruce, 13 ins. diam., bears S78° E, 70.6 ft. (107 lks.) dist., mkd. 4W S21 BT.

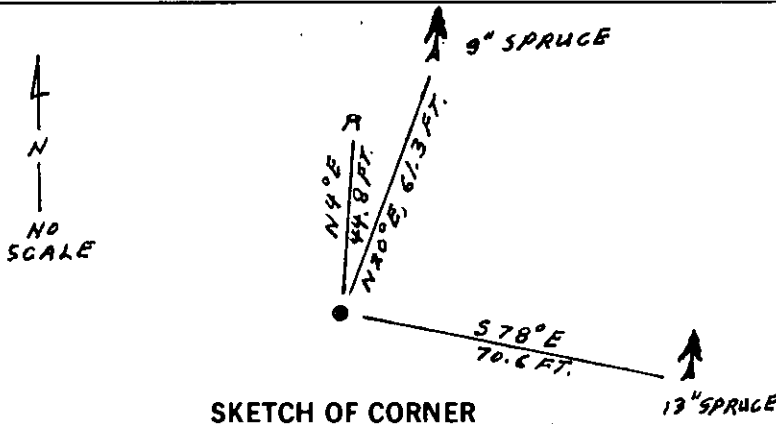
III. Establish one new Bearing Tree:

A spruce, 9 ins. diam., bears N20° E, 61.3 ft. dist., mkd. T33N R34W S16 BT.

Set a 6 ft. galvanized steel guard post with Land Survey Marker and Property Boundary decals, East, 3 ft.

Painted red bands around the bearing trees and attached Land Survey Monument and Bearing Tree signs.

Magnetic Declination: 20° East



CERTIFICATION

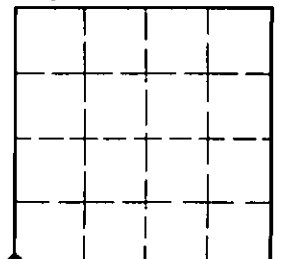
I, Thomas M. Hommel
certify the information shown herein is true and correct
Signature Ground Party Chief

I, Alvah F. Hughes
certify that this Corner Record correctly represents work performed by me or under my direction in compliance with the "Corner Recordation Act" (70-22-101, et seq., M.C.A.)
Signature of Surveyor & Seal

Date: 12/24/92 Reg. No. 7322LS
Employer: U.S. FOREST SERVICE

Office of Clerk and Recorder, County of Lincoln. This "corner record" was filed for record on Jan 19, 1993 was noted on the cross-index plat and is assigned page No. 5316, in book No. Coal M. Cumming by PB County Official

Sec. 16



• corner this sheet

Cross Index No. N-09 T. 33 N R. 34 W PMM