

INSTRUCTIONS

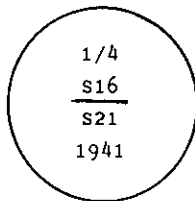
1. Original and/or subsequent record used to evaluate the corner position.
2. Description of evidence found, note discrepancies in the record, state method of establishing lost or obliterated corners.
3. Description of monument and accessories set to perpetuate the corner position.
4. Sketch of corner, show all pertinent data which can best be shown in a sketch example, corner marking, topography ties, position of accessories, etc.
5. Certification must be signed and sealed by Land Surveyor registered in the State of Montana.
6. Fill in Cross Index & Section Diagram at bottom of sheet.

CERTIFIED CORNER RECORDATION

Corner 1/4 Cor. of Secs. 16 & 21 T. 33 N. R. 34 W. P.M.M. Lincoln County

I. 1903 G.L.O. record by Allen B. Benedict: Set a wood post monument and two bearing trees.

1941 U.S.D.A. F.S. Exchange Survey No. 1258 by Donald Sawhill: "The 1/4 sec. cor. of secs. 16 and 21, which is a charred hemlock post in place, witnessed as described in the official record, but scribing obliterated by fire. At the corner point, set an iron post, 3 ft. long, 2 ins. diam., 26 ins. in the ground, with brass cap mkd.



from which:

A larch, 30 ins. diam., bears S30° E, 132 chs. (lks.) dist., mkd. 1/4 S21 BT. (New BT)
A sound larch stump, 30 ins. diam., bears N15° E, 5 lks. dist., mkd. 1/4 S16 BT. (New BT)
No live trees within limits in sec. 16."

1989 Recordation by Carl R. McMillen: Maintenance: Established 2 new bearing trees.

A 7" larch bears S40° W, 15.1 feet, marked "1/4 S21 BT".
A 9" larch bears N24° W, 20.8 feet, marked "1/4 S16 BT."

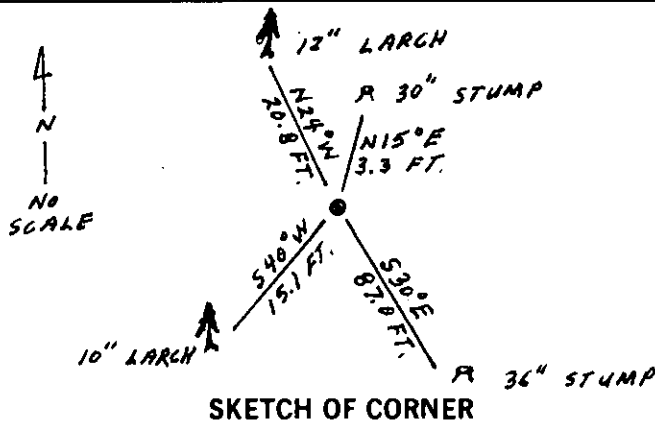
II. Found a 2 in. diam. iron pipe, 12 ins. above the ground with 2 1/2 ins. diam. U.S.F.S. brass cap, marked as shown above; from which:

A larch stump, 36 ins. diam., bears S30° E, 87.0 ft. (132 lks.) dist., log portion on ground, no visible scribe.
A larch stump, 30 ins. diam., bears N15° E, 3.3 ft. (5 lks.) dist., mkd. 1/4 S16 BT.
A larch, 10 ins. diam., bears S40° W, 15.1 ft. dist., visible scribe.
A larch, 12 ins. diam., bears N24° W, 20.8 ft. dist., visible scribe.

III. Set a 6 ft. galvanized steel guard post with Land Survey Marker decal, East, 3 ft.

Painted red bands around the bearing trees and attached Land Survey Monument and Bearing Tree signs.

Magnetic Declination: 20° East



SKETCH OF CORNER

CERTIFICATION

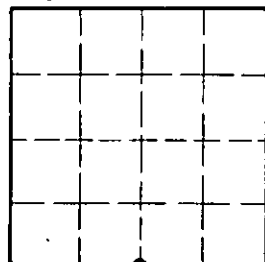
I, Thomas M. Hommel
certify the information shown herein is true and correct.
Thomas M. Hommel
Signature Ground Party Chief
I, Alvah F. Hughes
certify that this Corner Record correctly represents work performed by me or under my direction in compliance with the "Corner Recordation Act" (70-22-101, et seq., M.C.A.).
Alvah F. Hughes
Signature of Surveyor
Date: 12/28/92 Reg. No. 73221S
Employer: U.S. FOREST SERVICE

Office of Clerk and Recorder, County of Lincoln. This "corner record" was filed for record on Jan 19, 1993 was noted on the cross-index plat and is assigned page No. 5314, in book No. Coral M. Cumming by DB

County Official

Cross Index No. N-11 T. 33 N R. 34 W PMM

Sec. 16



• - corner this sheet