

INSTRUCTIONS

1. Original and/or subsequent record used to evaluate the corner position.
2. Description of evidence found, note discrepancies in the record, state method of establishing lost or obliterated corners.
3. Description of monument and accessories set to perpetuate the corner position.
4. Sketch of corner, show all pertinent data which can best be shown in a sketch example, corner marking, topography ties, position of accessories, etc.
5. Certification must be signed and sealed by Land Surveyor registered in the State of Montana.
6. Fill in Cross Index & Section Diagram at bottom of sheet.

CERTIFIED CORNER RECORDATION

Corner WC to MC of Secs. 20 & 21 T. 33 N. R. 34 W. P.M.M. Lincoln County

I. 1903 G.L.O. record by Allen B. Benedict: Stone in place, marked two bearing trees.

1980 recordation by Melvin D. Lauteren: "Found B.T.: 14" juniper marked T33N, R34W, S20, M.C.B.T.
No evidence of scribe on stone.

Original Record: 5" alder bears S56°30'E, 44 lks., T33N, R34W, S21, M.C.B.T. 10" cedar bears S1°W, 16 lks, T33N R34W S20 M.C.B.T. Cut X on ledge of rock 5' high, marked M.C. on south side w/ 4 grooves on east side.

I set a 2" inch pipe with 2 1/2" brass cap marked as shown on sketch. I made 2 bearing trees:
A 13" doug fir Bears S38°37'E 26.9' and a 9" doug fir bears S49°15'W 18.30'.
The distances were measured from the brass cap to the tap roots breast high (slope)."

Brass cap diagram:

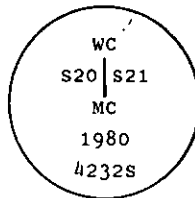


Diagram on back of form indicates MC position bears S0°04'E, 79.14' from set pipe.

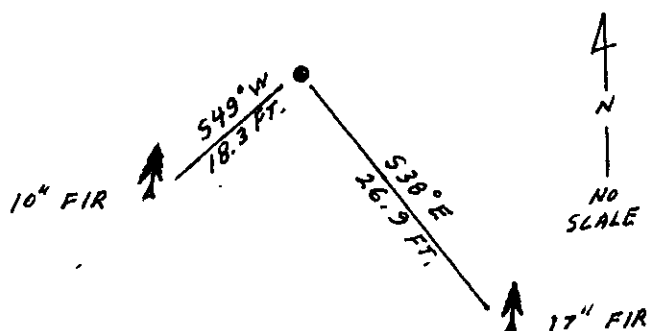
II. Found a 2 in. diam. iron pipe, 12 ins. above the ground with 2 1/2 ins. diam. brass cap, marked as shown above; from which:

A fir, 17 ins. diam., bears S38°E, 26.9 ft. dist., mkd. X snow blaze, healed face.
A fir, 10 ins. diam., bears S49°W, 18.3 ft. dist., mkd. X snow blaze, healed face.

Magnetic Declination: 20° East

III. Painted red bands around the bearing trees and attached Land Survey Monument and Bearing Tree signs.

No guard post set.



SKETCH OF CORNER

CERTIFICATION

I, Thomas M. Hommel
certify the information shown herein is true and correct.

Thomas M. Hommel
Signature Ground Party Chief

I, Alvah F. Hughes
certify that this Corner Record correctly represents work performed by me or under my direction in compliance with the "Corner Recordation Act" (70-22-101, et seq., M.C.A.).

Alvah F. Hughes
Signature of Surveyor & Seal

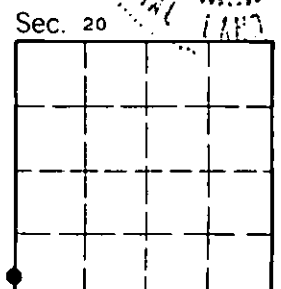
Date: 12/28/92 Reg. No. 7322LS

Employer: U.S. FOREST SERVICE

Office of Clerk and Recorder, County of Lincoln. This "corner record" was filed for record on Jan 19, 1993 was noted on the cross-index plat and is assigned page No. 5312, in book No. Coral M. Cummings & PB

County Official

Cross Index No. .92Q9 T. 33 N R. 34 W PMM



• - corner this sheet