

INSTRUCTIONS

1. Original and/or subsequent record used to evaluate the corner position.
2. Description of evidence found, note discrepancies in the record, state method of establishing lost or obliterated corners.
3. Description of monument and accessories set to perpetuate the corner position.
4. Sketch of corner, show all pertinent data which can best be shown in a sketch example, corner marking, topography ties, position of accessories, etc.
5. Certification must be signed and sealed by Land Surveyor registered in the State of Montana.
6. Fill in Cross Index & Section Diagram at bottom of sheet.

CERTIFIED CORNER RECORDATION

Corner 7 of ES 1258 T. 33 N. R. 34 W. P.M.M. Lincoln County

- I. 1941 U.S.D.A. F.S. Exchange Survey No. 1258 by Donald Sawhill: "Set an iron post, 3 ft. long, 2 in. diam., 26 ins. in the ground, with broken glass deposited at the base, with brass cap marked

7 E S 1258
1941

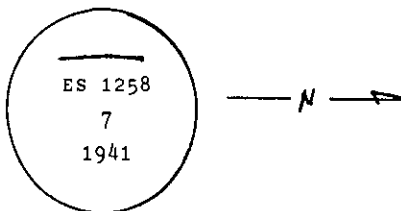
The point on the brass cap is the exact cor. point from which

A cross (x) on a white pine, 8 ins. diam., bears $N6^{\circ}45'E$, 32 lks. dist.

A cross (x) on a cedar, 10 ins. diam., bears $N83^{\circ}15'E$, 47 lks. dist., each blazed and scribed 7 E S 1258 B T.

Raise a mound of earth 4 ft. base, 2 ft. high, E. of corner."

- II. Found a 2 in. diam. iron pipe, 8 ins. above ground with 2 1/2 ins. diam. U.S.F.S. brass cap, marked as shown:



from which:

A pine snag, 15 ins. diam., bears $N7^{\circ}E$, 21.1 ft. (32 lks.) dist., healed face.

A cedar, 18 ins. diam., bears $N83^{\circ}E$, 31.0 ft. (47 lks.) dist., mkd. 7 ES 1258 BT.

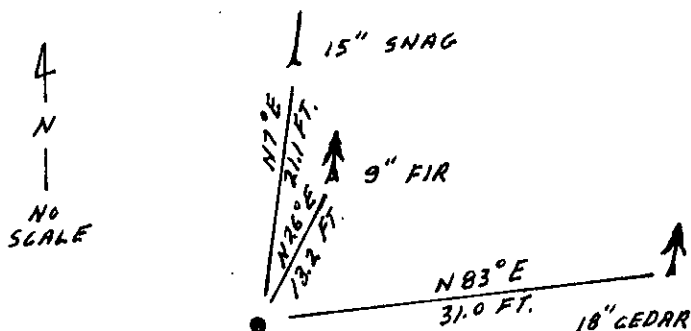
- III. Established one new bearing tree:

A fir, 9 ins. diam., bears $N26^{\circ}E$, 13.2 ft. dist., mkd. 7 ES 1258 BT.

Painted red bands around the bearing trees and attached Land Survey Monument and Bearing Tree signs.

Set a 6 ft. galvanized steel guard post with Land Survey Marker and Property Boundary decals, $S24^{\circ}E$, 3 ft.

Magnetic Declination: 20° East



SKETCH OF CORNER

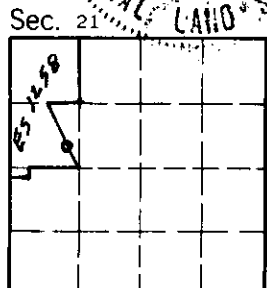
CERTIFICATION

I, Thomas M. Hommel
certify the information shown herein is true and correct.
Thomas M. Hommel
Signature Ground Party Chief

I, Alvah F. Hughes
certify that this Corner Record correctly represents work performed by me or under my direction in compliance with the "Corner Recordation Act" (70-22-101, et seq., M.C.A.).
Alvah F. Hughes
Signature of Surveyor & Seal

Date: 12/28/92 Reg. No. 7322HS
Employer: U.S. FOREST SERVICE

Office of Clerk and Recorder, County of Lincoln. This "corner record" was filed for record on Jan 19, 1993 was noted on the cross-index plat and is assigned page No. 5309, in book No. Corral M. Cummings & DB
County Official



Cross Index No. 7 ES 1258 T. 33 N R. 34 W P.M.M.

• - corner this sheet