

INSTRUCTIONS

1. Original and/or subsequent record used to evaluate the corner position.
2. Description of evidence found, note discrepancies in the record, state method of establishing lost or obliterated corners.
3. Description of monument and accessories set to perpetuate the corner position.
4. Sketch of corner, show all pertinent data which can best be shown in a sketch example, corner marking, topography ties, position of accessories, etc.
5. Certification must be signed and sealed by Land Surveyor registered in the State of Montana.
6. Fill in Cross Index & Section Diagram at bottom of sheet.

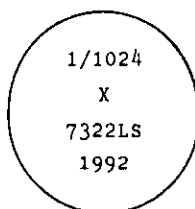
CERTIFIED CORNER RECORDATION

Corner 1/1024 Sec. 21 T. 33 N. R. 34 W. P.M.M. Lincoln County

I. No records found.

II. No evidence found on the ground.

III. At the position determined by survey, set an aluminum rod, $3/4$ ins. diam., 30 ins. long, 29 ins. in the ground, with $3 1/4$ ins. diam., U.S.D.A. Forest Service aluminum cap, marked as shown:



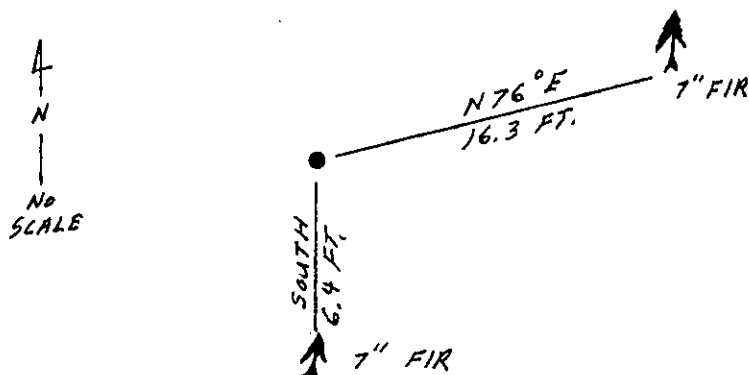
Established two new bearing trees:

- A fir, 7 ins. diam., bears $N76^{\circ}E$, 16.3 ft. dist., mkd. 1/1024 S21 BT.
 A fir, 7 ins. diam., bears South, 6.4 ft. dist., mkd. 1/1024 S21 BT.

Painted red bands around the bearing trees and attached Land Survey Monument and Bearing Tree signs.

Set a 6 ft. galvanized steel guard post with Land Survey Marker and Property Boundary decals, West, 3 ft.

Magnetic Declination: 20° East



SKETCH OF CORNER

CERTIFICATION

1. Thomas M. Hommel
 certify the information shown herein is true and correct.

Thomas M. Hommel
 Signature Ground Party Chief

1. Alvah F. Hughes
 certify that this Corner Record correctly represents work performed by me or under my direction in compliance with the Corner Recordation Act" (70-22-101, et seq., M.C.A.)

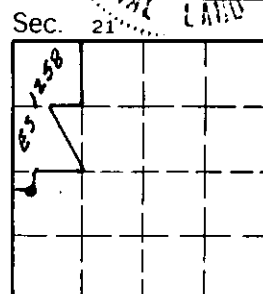
Alvah F. Hughes
 Signature of Surveyor & Seal

Date: 12/28/92 Reg. No. 7322LS

Employer: U.S. FOREST SERVICE

Office of Clerk and Recorder, County of Lincoln. This "corner record" was filed for record on Jan 19, 1993 was noted on the cross-index plat and is assigned page No. 5297, in book No. Carol M. Cummings, Esq.
 County Official

Cross Index No. 125Q-9.25 T. 33 N R. 34 W PMM



• corner this sheet