

- INSTRUCTIONS
1. Original and/or duplicate record used to evaluate the corner position.
 2. Description of evidence found, note discrepancies in the record, state no that of a discrepancy but not attempted to correct.
 3. Description of monument and accessories set to perpetuate the corner position.
 4. Sketch or corner, show all pertinent data which can best be shown in a sketch example, corner marking, topography, etc., position of accessories, etc.
 5. Certification must be signed and sealed by Registered Land Surveyor in State of Montana.
 6. Fill in Cross Index & Section Diagram at bottom of sheet.

CERTIFIED CORNER RECORDATION

Corner 1/4 S21/S28 T. 33N R. 34W P.M.M. Lincoln County

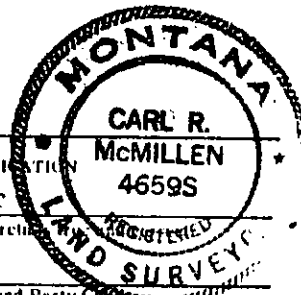
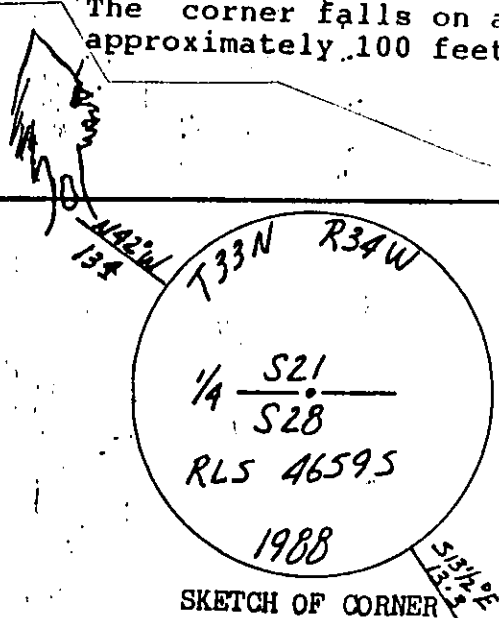
RECORD: The original G.L.O. survey was conducted by Allen B. Benedict in 1905. ...set a slate stone 18x8x4 inches, 12 inches in the ground for 1/4 corner marked 1/4 S on the North face from which a 5 inch pine bears N15 1/4E, 47 links (31.02 feet), marked 1/4 S 21 BT, and a 24 inch pine bears S 54 45' W, 53 links (34.98 feet).

The Section line was retraced during the survey of U.E.S. 898 by Grant Higgins in 1922. The W 1/16 21/28 and the E-W-E 1/256 21/28 were established as part of the HES survey.

The section line was retraced again from the 1/4 21/28 to the southeast corner of Section 21 during the survey of Exchange Survey #1258 by Donald Sawhill in 1942.

FOUND: A rock cairn at the approximate position of the 1/4 corner. Found a bearing tree snag for the BT of Section 28. The bearing tree was completely out of the ground and the scribing was detached. We were unable to determine the original location of the bearing tree. We found one root hole which fit reasonably well but proved to be inconclusive. The position for the 1/4 corner proportionally fell within a 3 foot radius of the rock cairn and the corner position from the root hole. The corner was established proportionally between the above mentioned HES corners.

MAINTENANCE: Set a 2 1/2 x 30 inch aluminum monument with 3 1/4 inch cap marked as shown below. Placed a 2 x 3 foot rock collar around the monument and established 2 new bearing trees:
A 7 inch douglas fir bears N42W, 13.4 feet, marked 1/4 S21 BT.
A 7 inch douglas fir bears S13 1/2E, 13.3 feet, marked 1/4 S 28 BT.
The blazes were painted red and a 6 inch band of red paint was also placed around the bearing trees. Bearing tree tags were also placed on the trees.
The corner falls on a very steep rocky south facing slope approximately 100 feet west of a small ravine.



CERTIFICATION
I, Steven R. Moyer
certify the information shown hereto is true and correct.

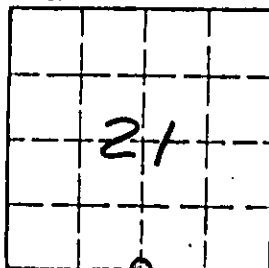
Signature Ground Party Carl R. McMillen
I, Carl R. McMillen
certify that this Corner Record correctly represents work performed by me or under my direction in compliance with the "Corner Recordation Act" (24-27-101 et seq., M.D.A.)

Signature of Surveyor & Seal
Date 4-10-89 Reg. No. 4659S
Employer: Tri-State Land Surveying

Office of Clerk and Recorder, County of Lincoln. This "corner record" was filed for record on the April 24 day of 1989 was noted on the cross-index plat and is assigned page No. 4057, in book No. Janet H. Sugil by Dick Sawhill

County Official

Sec. 21



W 1/4 2/128
ORIGINAL STONE

--- M = 589°57'51"E 2324.83 ---

M = 589°50'43"E, 1325.74

R = 589°48'E, 1325.94

M = 589°53'17"E 999.09

R = 589°40'E, 999.24

E.W. = 1/256 2/128
ORIGINAL STONE

... R = 589°44'34"E, 2325.18 ---