

CERTIFIED LAND CORNER RECORDATION

SECTION 5 TWP. 33 N., R. 34 @., M. P. M.

DESCRIPTION OF CORNER EVIDENCE FOUND, AND ORIGINAL RECORD (IF KNOWN)

North and South Quarter Corners and SW Corner are all Brass Cap Monuments set by B.L.M. — East 1/4 Corner is a steel rod with one B.T. stump.
West 1/4 Corner a steel rod set at call distance from M.P. # 35 on Montana - Idaho Line

DESCRIPTION OF MONUMENT AND ACCESSORIES ESTABLISHED TO PERPETUATE THE ORIGINAL LOCATION OF THIS CORNER:

Date of work: Sept. 1975

1/2"x24" capped steel rods stamped J.N. 534 E.S. set at points indicated thus ⊙ on diagram on REVERSE SIDE.

SKETCH, WITH COURSE AND DISTANCE TO ADJACENT CORNERS IF DETERMINED IN THIS SURVEY. (MAY SKETCH OR PASTE REPRODUCTION ON REVERSE SIDE.)

SEE DIAGRAM ON REVERSE SIDE

Surveyor's Seal

I, J. H. Ninneman
certify that the information shown herein is true and correct.

J. H. Ninneman
Signature of Ground Party Chief

I, Jack. W. Ninneman
certify that I have carefully performed or reviewed the work done on the diagrammed corner as reported on this recordation form and approve the same.

Jack W. Ninneman
Signature of Surveyor

DIAGRAM OF CORNER:

N. See reverse
Side

= Corner recorded on the sheet

534 E.S.
Registration Number

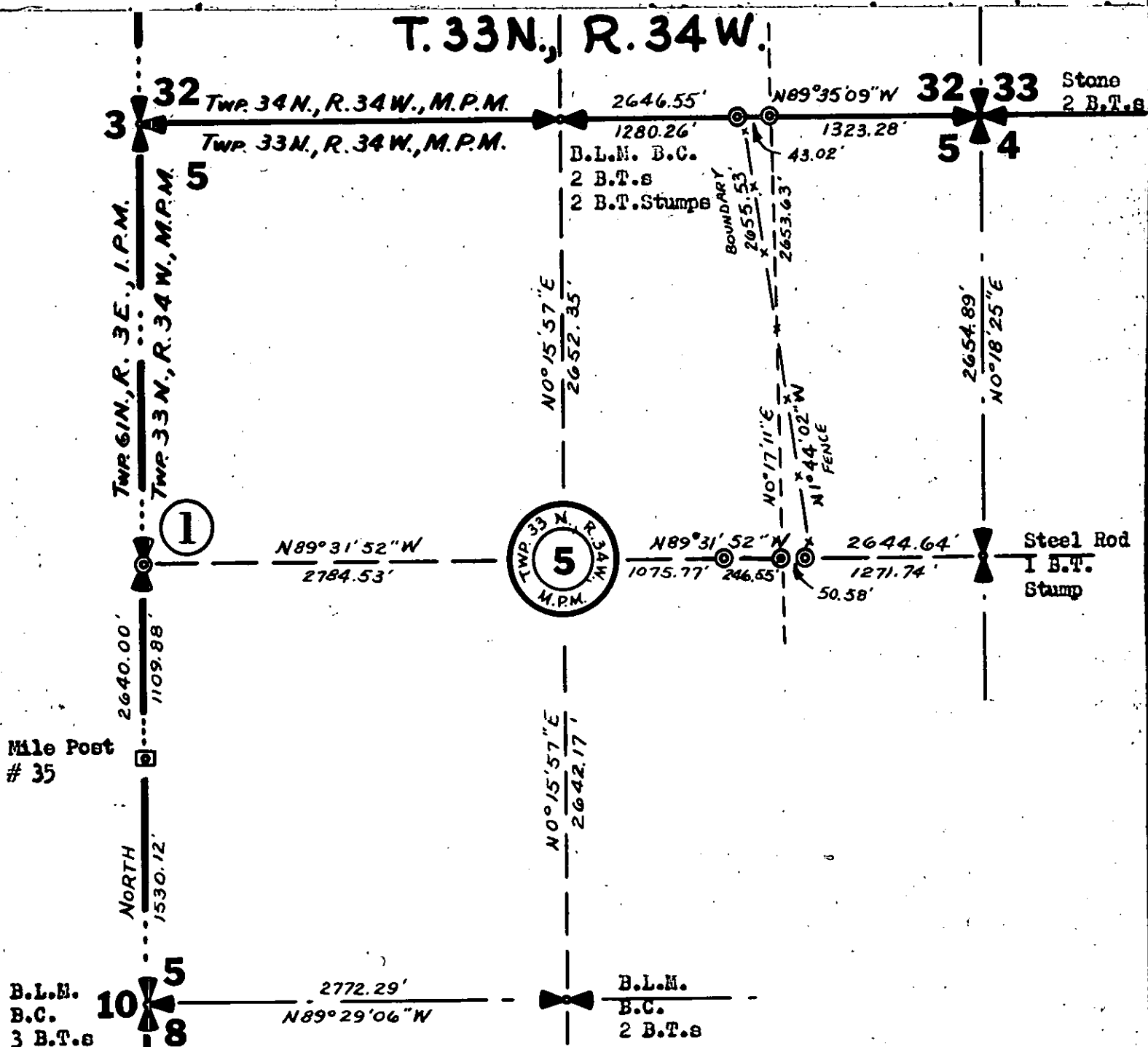
Office of Clerk and Recorder, County of Lincoln

This "corner record" was filed for record on the 14th day of October 1975, was noted on the cross-index plat and is assigned page No. 388, in book No. 1

Eleanor L. Vaughn Mer. *Watson* Deputy
County Official

C-5 C-8
C-5 C-9
A-7 C-7-8
E-7 A-7-8
A-8 C-8-9
A-9

T. 33 N., R. 34 W.



1. Set A $\frac{1}{2}$ "X24" Steel Rod
With Cap Stamped
J.N. 534 E.S.

2. Set A $\frac{1}{2}$ "X24" Steel Rod
With Cap Stamped
J.N. 534 E.S.

Set $\frac{1}{2}$ "X24" Steel Rods
With Caps Stamped
J.N. 534 E.S.

A 20" Cedar Bears N 45° W
Marked With Location Poster Only
No B.T.s Available On Montana Side
Cor. Falls In Old Fence Running North & South
A 10" Pine Bears North 1.00 Ft.
Scribed E 1/16 S 32 & Posted
A 10" Larch Bears S 10° W 23.10 Ft.
Scribed E 1/16 S 5 & Posted

At Points Designated On East-West
Centerline Of Subject Section 5
(No B.T.s Scribed Or Posted)

DICK BAKER - HWY. 2 - IOAHO LINE