

CERTIFIED LAND CORNER RECORDATION

DESCRIPTION OF CORNER EVIDENCE FOUND, AND ORIGINAL RECORD (IF KNOWN)

No ORIGINAL CORNER ESTABLISHED

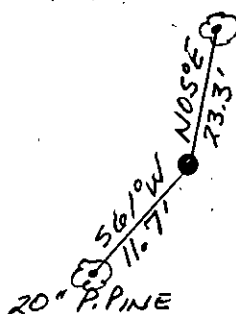
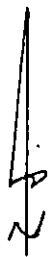
DESCRIPTION OF MONUMENT AND ACCESSORIES ESTABLISHED
TO PERPETUATE THE ORIGINAL LOCATION OF THIS CORNER:

Date of work: MAY '87

CS 1/16 - SET 5/8" x 24" REBAR W/ ORANGE PLASTIC CAP
STAMPED "GOACHER 7318-S"

13" SPRUCE

ATTACHED B.T. TAGS TO EACH
B.T. FOOT BLAZE W/ "BT" SCRIBING
PAINTED RED, LOCATION POSTER



SKETCH, WITH COURSE AND DISTANCE TO ADJACENT CORNERS IF DETERMINED IN THIS SURVEY.
(MAY SKETCH OR PASTE REPRODUCTION ON REVERSE SIDE.)

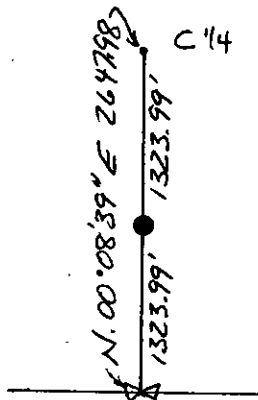


DIAGRAM OF CORNER:

Surveyor's Seal

I, RICHARD G. GOACHER

certify that the information shown herein is true and correct.

Signature of Ground Party Chief

I, RICHARD G. GOACHER

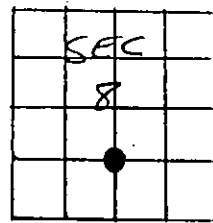
certify that I have carefully performed or reviewed the work
done on the diagrammed corner as reported on this recordation
form and approve the same.

Signature of Surveyor

7318-S

Registration Number

N.



= Corner recorded on the sheet

Office of Clerk and Recorder, County of Lincoln

This "corner record" was filed for record on the 28th day of May, 19 87, was noted on the cross-index plat and is
assigned page No. 3553, in book No. _____

County Official