

CERTIFIED LAND CORNER RECORDATION

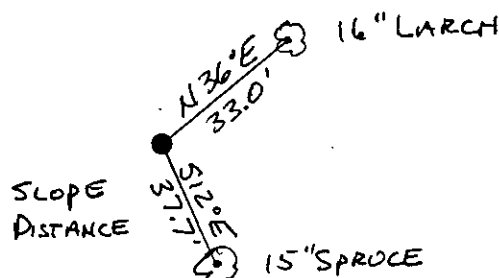
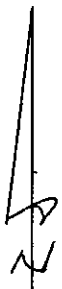
DESCRIPTION OF CORNER EVIDENCE FOUND, AND ORIGINAL RECORD (IF KNOWN)

No ORIGINAL CORNER ESTABLISHED

DESCRIPTION OF MONUMENT AND ACCESSORIES ESTABLISHED
TO PERPETUATE THE ORIGINAL LOCATION OF THIS CORNER:

Date of work: May '87

C¹/₄ CORNER - SET ⁵/₈" x 24" REBAR W/ORANGE PLASTIC CAP
STAMPED "GOACHER 7318-S"



ATTACHED B.T. TAGS TO
EACH B.T. FOOTBLAZE
W/ C¹/₄ BT "SCRIBING -
PAINTED RED. LOCATION
POSTER & LAND SURVEY
MONUMENT SIGNS.

SKETCH, WITH COURSE AND DISTANCE TO ADJACENT CORNERS IF DETERMINED IN THIS SURVEY.
(MAY SKETCH OR PASTE REPRODUCTION ON REVERSE SIDE.)

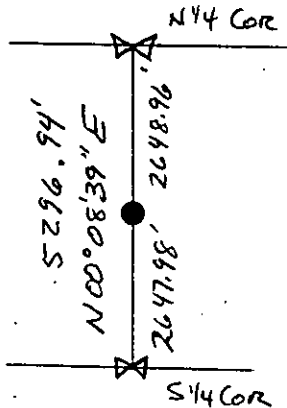
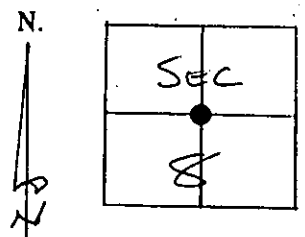


DIAGRAM OF CORNER:



● = Corner recorded on the sheet

Surveyor's Seal

I, RICHARD G. GOACHER
certify that the information shown herein is true and correct.

Signature of Ground Party Chief

I, RICHARD G. GOACHER
certify that I have carefully performed or reviewed the work
done on the diagrammed corner as reported on this recordation
form and approve the same.

Signature of Surveyor

7318-S

Registration Number

Office of Clerk and Recorder, County of Lincoln

This "corner record" was filed for record on the 26th day of May 19 87, was noted on the cross-index plat and is
assigned page No. 3551, in book No. _____

County Official

Deputy

Cross Index No. _____ T _____ R _____ Mer.