

CERTIFIED LAND CORNER RECORDATION

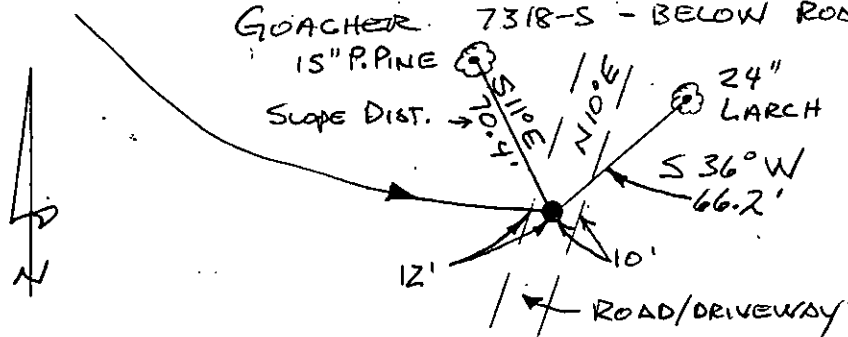
DESCRIPTION OF CORNER EVIDENCE FOUND, AND ORIGINAL RECORD (IF KNOWN)

NO ORIGINAL CORNER ESTABLISHED

DESCRIPTION OF MONUMENT AND ACCESSORIES ESTABLISHED TO PERPETUATE THE ORIGINAL LOCATION OF THIS CORNER:

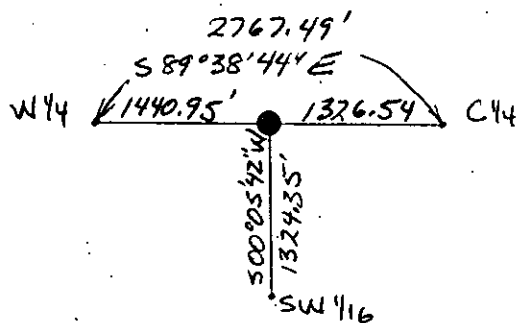
Date of work: APRIL '87

CW 116 - SET $\frac{3}{8}$ " x 24" REBAR W/ ORANGE PLASTIC CAP STAMPED
GOACHER 7318-S - BELOW ROAD SURFACE 5"



ATTACHED B.T. TAGS TO EACH B.T. FOOT BLAZE W/ "BT" SCRIBING - PAINTED RED. LOCATION POSTER

SKETCH, WITH COURSE AND DISTANCE TO ADJACENT CORNERS IF DETERMINED IN THIS SURVEY. (MAY SKETCH OR PASTE REPRODUCTION ON REVERSE SIDE.)



Surveyor's Seal

[Signature]

I, RICHARD G. GOACHER
certify that the information shown herein is true and correct.

Signature of Ground Party Chief

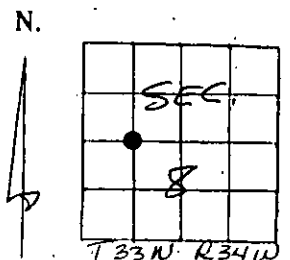
I, RICHARD G. GOACHER
certify that I have carefully performed or reviewed the work done on the diagrammed corner as reported on this recordation form and approve the same.

Signature of Surveyor

7318-S

Registration Number

DIAGRAM OF CORNER:



● = Corner recorded on the sheet

Office of Clerk and Recorder, County of Lincoln

This "corner record" was filed for record on the 30 day of April 19 87, was noted on the cross-index plat and is assigned page No. 3536, in book No. _____

[Signature]
County Official