

# CERTIFIED LAND CORNER RECORDATION

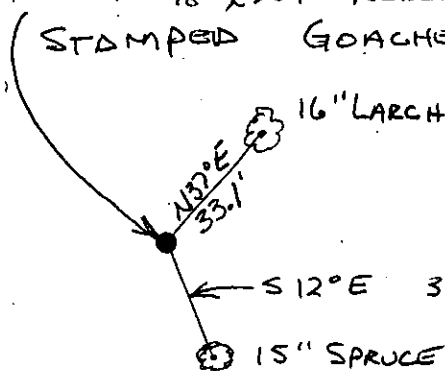
## DESCRIPTION OF CORNER EVIDENCE FOUND, AND ORIGINAL RECORD (IF KNOWN)

NO ORIGINAL CORNER ESTABLISHED

## DESCRIPTION OF MONUMENT AND ACCESSORIES ESTABLISHED TO PERPETUATE THE ORIGINAL LOCATION OF THIS CORNER:

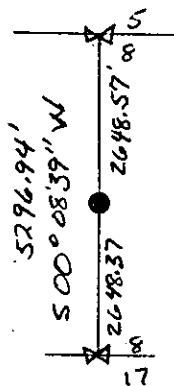
C<sup>1</sup>/<sub>4</sub> CORNER - SET 5/8" x 24" REBAR W/ ORANGE PLASTIC CAP  
STAMPED GOACHER 7318-S

Date of work: APRIL '87



ATTACHED B.T. TAGS TO EACH  
BT. FOOT BLAZE W/ "C<sup>1</sup>/<sub>4</sub> BT"  
SCRIBING - POINTED RED.  
LOCATION POSTER & LAND SURVEY  
MONUMENT SIGNS.

SKETCH, WITH COURSE AND DISTANCE TO ADJACENT CORNERS IF DETERMINED IN THIS SURVEY.  
(MAY SKETCH OR PASTE REPRODUCTION ON REVERSE SIDE.)



## DIAGRAM OF CORNER:

Surveyor's Seal

I, RICHARD G. GOACHER  
certify that the information shown herein is true and correct.

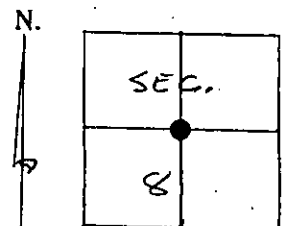
Signature of Ground Party Chief

I, RICHARD G. GOACHER  
certify that I have carefully performed or reviewed the work  
done on the diagrammed corner as reported on this recordation  
form and approve the same.

Signature of Surveyor

7318-S

Registration Number



C<sup>1</sup>/<sub>4</sub> Sec. 8 T.33N., R.34W

● = Corner recorded on the sheet

Office of Clerk and Recorder, County of Lincoln

This "corner record" was filed for record on the 30 day of April 19 87, was noted on the cross-index plat and is  
assigned page No. 3535, in book No. \_\_\_\_\_

James B. Sugil by Bill Bischoff  
County Official Deputy