

CERTIFIED LAND CORNER RECORDATION

DESCRIPTION OF CORNER EVIDENCE FOUND, AND ORIGINAL RECORD (IF KNOWN)

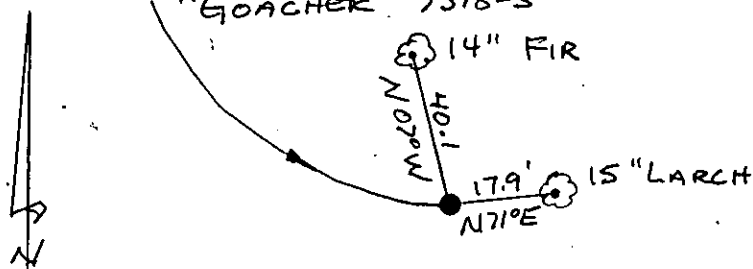
NO ORIGINAL CORNER ESTABLISHED

DESCRIPTION OF MONUMENT AND ACCESSORIES ESTABLISHED TO PERPETUATE THE ORIGINAL LOCATION OF THIS CORNER:

SW 1/16 - SET 7/8" x 24" REBAR W/ ORANGE PLASTIC CAP STAMPED

Date of work: APRIL '87

"GOACHER 7318-S"



ATTACHED BT TAGS TO EACH
BT. FOOT BLAZE W/ "BT"
SCRIBING - PAINTED RED.
LOCATION POSTER &
LAND SURVEY MONUMENT
SIGNS.

SKETCH, WITH COURSE AND DISTANCE TO ADJACENT CORNERS IF DETERMINED IN THIS SURVEY. (MAY SKETCH OR PASTE REPRODUCTION ON REVERSE SIDE.)

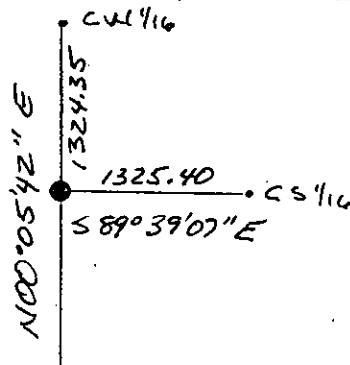


DIAGRAM OF CORNER:

Surveyor's Seal

I, RICHARD G. GOACHER
certify that the information shown herein is true and correct.

Signature of Ground Party Chief

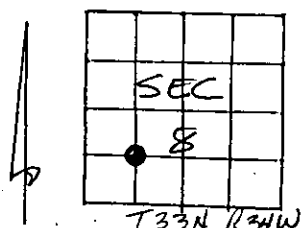
I, RICHARD G. GOACHER
certify that I have carefully performed or reviewed the work
done on the diagrammed corner as reported on this recordation
form and approve the same.

Signature of Surveyor

7318-S

Registration Number

N.



● = Corner recorded on the sheet

Office of Clerk and Recorder, County of Lincoln

This "corner record" was filed for record on the 30 day of April 19 87, was noted on the cross-index plat and is
assigned page No. 3534, in book No. _____

Janet B. Siegel by Bill Backoff Deputy
County Official