

## INSTRUCTIONS

1. Original and/or subsequent record used to evaluate the corner position.
2. Description of evidence found, note discrepancies in the record, state method of establishing lost or obliterated corners.
3. Description of monument and accessories set to perpetuate the corner position.
4. Sketch of corner, show all pertinent data which can best be shown in a sketch example, corner marking, topography ties, position of accessories, etc.
5. Certification must be signed and sealed by Registered Land Surveyor in State of Montana.
6. Fill in Cross Index & Section Diagram at bottom of sheet.

## CERTIFIED CORNER RECORDATION

Corner C-W- NW 1/64 T. 33 N., R. 34 W., P.M.M. Lincoln County

1) NO PREVIOUS RECORD.

2) NO PREVIOUS EVIDENCE.

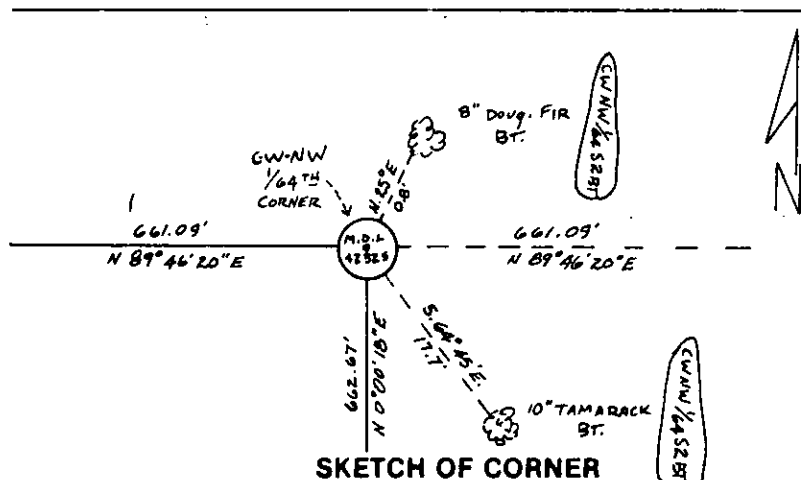
3) MONUMENT AND ACCESSORIES SET TO PERPETUATE CORNER POSITION:

Set a 5/8 inch Dia. x 24 inch long Rebar with Yellow P.V.C. Cap 1-1/4 inch dia. stamped M.D.L. 4232 S for the corner, from which:

A Douglas Fir, 8 ins. diam., bears N.25°E, 0.8 ft. dist.

A Tamarack, 10 ins. diam., bears S.64°45'E, 17.7 ft. dist.

Both blazed and scribed: C-W-NW 1/64 52 BT., and painted red.



SKETCH OF CORNER

## CERTIFICATION

John R. Damon

certify the information shown herein is true and correct.

*John R. Damon*  
Signature Ground Party Chief

Melvin D. Lauteren

certify that this Corner Record correctly represents work performed by me or under my direction in compliance with the "Corner Recordation Act" (70-22-601 M.C.A.)

*Melvin D. Lauteren*  
Signature of Surveyor & Seal

Date: 10/18/84 Reg. No. 4232 S

Employer: Kootenai Engineering, Inc.

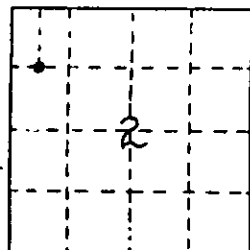
Office of Clerk and Recorder, County of LINCOLN. This "corner record" was filed for record on the 1st day of NOV 1984, was noted on the cross-index plat and is assigned page No. 2768, in book No. Janet B. Siegel by Betty

County Official

*Condor*  
deputy

Cross Index No. \_\_\_\_\_ T. \_\_\_\_\_ R. \_\_\_\_\_ PMM

Sec. 2 TWP. 33 N. R. 34 W.



• corner this sheet