

## INSTRUCTIONS

1. Original and/or subsequent record used to evaluate the corner position.
2. Description of evidence found, note discrepancies in the record, state method of establishing lost or obliterated corners.
3. Description of monument and accessories set to perpetuate the corner position.
4. Sketch of corner, show all pertinent data which can best be shown in a sketch example, corner marking, topography ties, position of accessories, etc.
5. Certification must be signed and sealed by Registered Land Surveyor in State of Montana.
6. Fill in Cross Index & Section Diagram at bottom of sheet.

## CERTIFIED CORNER RECORDATION

Corner C-W-SW 1/4 SEC. 2 T. 33 N., R. 34 W., P.M.M. Lincoln County

1) NO PREVIOUS RECORD.

2) NO PREVIOUS EVIDENCE.

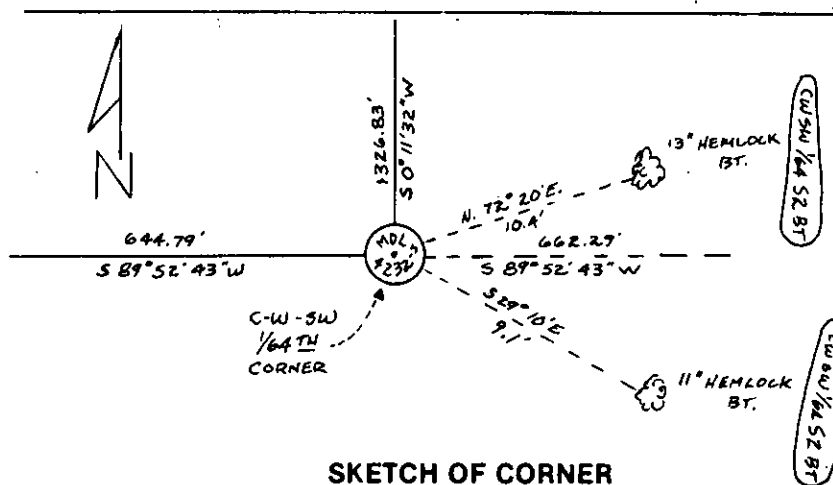
3) MONUMENT AND ACCESSORIES SET TO PERPETUATE CORNER POSITION:

Set a 5/8 inch dia. x 24 inch long Rebar with Yellow P.V.C. Plastic Cap 1-1/4 inch dia. stamped: MDL 4232 S for the corner, from which:

A Hemlock, 13 inches dia. bears N72°20'E, 10.4 ft. dist.

A Hemlock, 11 inches dia. bears S29°10'E, 9.1 ft. dist.

Both blazed and scribed: C-W-SW 1/4 SEC 2 BT, and painted red.



## CERTIFICATION

I, John R. Damon

certify the information shown herein is true and correct.

John R. Damon  
Signature Ground Party Chief

I, Melvin D. Lauteren

certify that this Corner Record correctly represents work performed by me or under my direction in compliance with the "Corner Recordation Act" (70-22-01, M.C.A.)

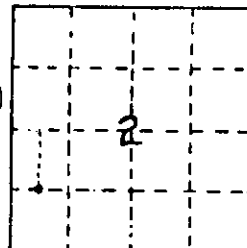
Melvin D. Lauteren  
Signature of Surveyor & Seal

Date: 10/18/84 Reg. No. 4232 S

Employer: Kootenai Engineering, Inc.

Office of Clerk and Recorder, County of Lincoln. This "corner record" Sec. 2 TWP. 33 N. R. 34 W.  
was filed for record on the 1<sup>st</sup> day of Nov. 19 84, was noted on the cross-index plat and  
is assigned page No. 2766, in book No. Janet BF Siegel by Betty Conces  
County Official Deputy

Cross Index No. 33 R. 34 P.M.M.



• corner this sheet