

# CERTIFIED LAND CORNER RECORDATION

SECTIONS 8, 9 AND 16, 17 TWP. 33 N., R. 34 W., M.P.M.

## DESCRIPTION OF CORNER EVIDENCE FOUND, AND ORIGINAL RECORD (IF KNOWN)

1. Brass cap and bearing trees by B.L.M.
2. Corner destroyed by road.
3. Brass cap and bearing trees by B.L.M.
4. Not previously set.
5. Destroyed by road construction.
6. Brass cap by U.S.F.S.

NOTE: Numbers refer to sketch on back.

## DESCRIPTION OF MONUMENT AND ACCESSORIES ESTABLISHED TO PERPETUATE THE ORIGINAL LOCATION OF THIS CORNER:

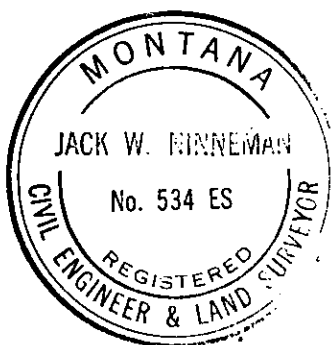
Date of work: Oct. 1971

1. Brass cap and bearing trees by B.L.M.
2. Set a brass cap from which a 24" cedar bears S 74° 19' W 82.8 Ft., scribed S 17 B.T. and posted. A 10" larch bears S 51° 18' E 38 Ft. scribed S 16 B.T. and posted. A 14" larch bears N 59° 56' E 29 Ft. scribed S 9 B.T. and posted. No trees available in Sec 8.
3. Brass cap and bearing trees by B.L.M.
4. Set a brass cap, no trees available.
5. Set a brass cap from which a 14" fir bears S 33° E 90.5 Ft. scribed  $\frac{1}{4}$  S 16 B.T. and posted. A 10" pine bears S 57° 37' W 50 Ft. scribed  $\frac{1}{4}$  S 17 B.T. and posted.
6. Brass cap by U.S.F.S.

SKETCH, WITH COURSE AND DISTANCE TO ADJACENT CORNERS IF DETERMINED IN THIS SURVEY.  
(MAY SKETCH OR PASTE REPRODUCTION ON REVERSE SIDE.)

SEE REVERSE

Surveyor's Seal



I, Jack H. Ninneman  
certify that the information shown herein is true and correct.

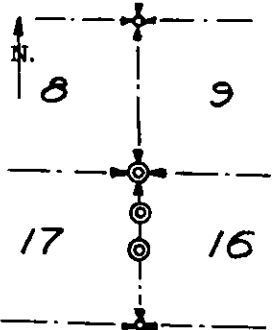
*Jack H. Ninneman*  
Signature of Ground Party Chief

I, Jack W. Ninneman  
certify that I have carefully performed or reviewed the work done on the diagrammed corner as reported on this recordation form and approve the same.

*Jack W. Ninneman*  
Signature of Surveyor

Mont. 534 ES  
Registration Number

## DIAGRAM OF CORNER:

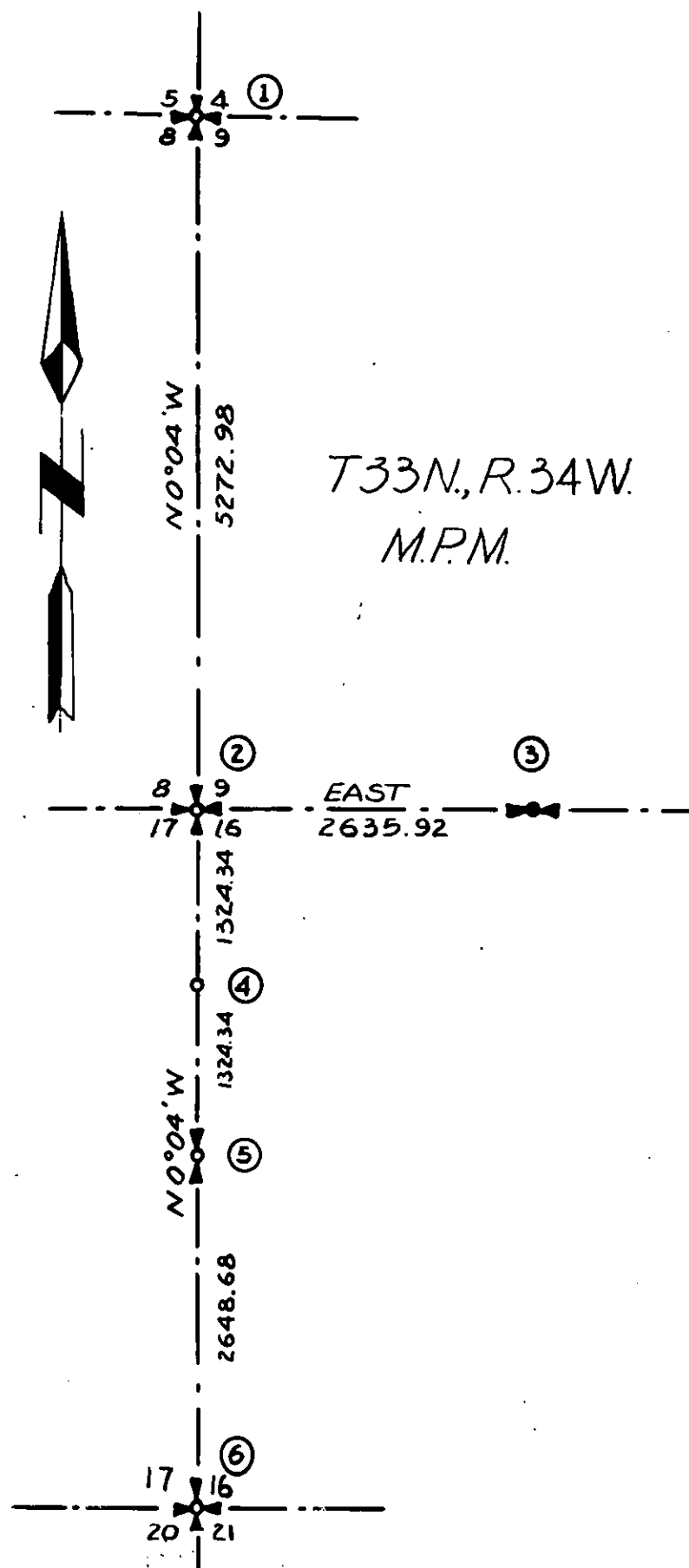


⊙ = Corner recorded on the sheet

Office of Clerk and Recorder, County of Lincoln

This "corner record" was filed for record on the 14<sup>th</sup> day of January 1972, was noted on the cross-index plat and is assigned page No. 258, in book No. 1

*Thomas L. Vaughan* by *Betty Strohacker*  
County Official Deputy



B-194