

CERTIFIED CORNER RECORDATION

Corner 33 | 34
4 | 3 T. 33 N. R. 34 W. P.M.M. LINCOLN County

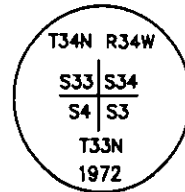
I. 1903 G.L.O. survey of the North Boundary of T. 33 N., R. 34 W. by Allen B. Benedict: Set a tamarack post and 4 bearing trees.

1967 B.L.M. Remonumentation by Joseph E. French: The cor. of secs. 3, 4, 33 and 34, as determined from the remains of the original bearing trees:

- A larch, 22 ins. diam, bears N63°E, 29 lks. dist., mkd. T34N R34W S34 BT.
- A fir stump, 12 ins. diam, bears S39 1/4°E, 27 lks. dist., mkd. T33N R34W S3 BT.
- A larch snag, 12 ins. diam, bears S5 1/2°W, 21 lks. dist., mkd. T33N R34W S4 BT.
- A larch, 21 ins. diam, bears N59°W, 44 lks. dist., mkd. with an overgrown blaze.

At the corner point

Set an iron post, 30 ins. long, 2 1/2 ins. diam., 24 ins. in the ground, with brass cap mkd.



from which the new bearing trees:

- A cedar, 12 ins. diam, bears S62 1/4°E, 15 lks. dist., mkd. T33N R34W S3 BT.
- A cedar, 9 ins. diam, bears S41 1/4°W, 43 lks. dist., mkd. T33N R34W S4 BT.

II. Found a 2 in. diam. iron pipe, 6 ins. above the ground, firmly set with a 2 1/2 in. diam. brass cap marked as shown above, from which:

- A larch, 20 ins. diam, bears N67°E, 19.3 ft. dist., with 34 B visible.
- A cedar, 16 ins. diam, bears S62°E, 9.9 ft. dist., mkd. with a healed face.
- A cedar, 11 ins. diam, bears S42°W, 28.3 ft. dist., mkd. with visible scribe marks.
- A larch stump, 22 ins. diam., bears N59°W, 29.4 ft. dist. mkd. with a visible face.
- A larch stump, bears S8°W, 13.4 ft. dist. mkd. with T33N R34W S4 visible.

III. Established 1 new bearing tree:

- A hemlock, 9 ins. diam, bears N42°W, 35.2 ft. dist., mkd. T34N R34W S33 BT.

Painted red the scribed faces and 6 in. red bands on the bearing trees. Attached Land Survey Monument and Bearing Tree signs.

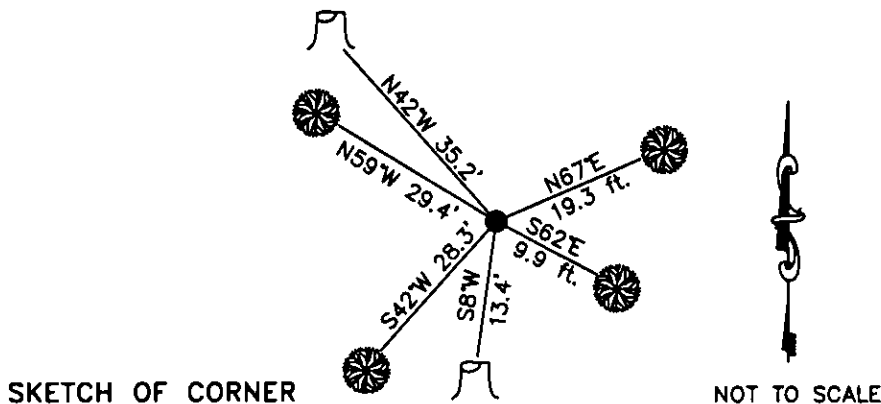
Date of Fieldwork: 5/9/2008

Survey crew: Steve Boyer, Tom Hommel

Magnetic declination: 20° East assumed

Equipment used: Hand compass and loggers tape

U.S. Forest Service, Supervisors Office, 31374 Hwy. 2, Libby, MT 59923 (406) 293-6211



SKETCH OF CORNER

NOT TO SCALE

CERTIFICATION

I, Thomas M. Hommel 10800LS
certify the information shown herein is true and correct.

Signature Ground Party Chief

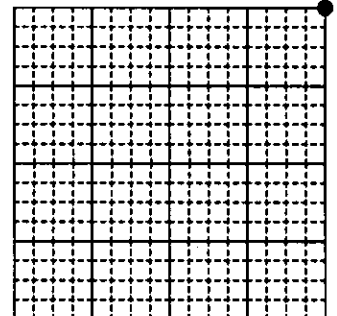
I, Steven A. Boyer
certify that this Corner Record correctly represents work performed by me or under my direction in compliance with the "Corner Recordation Act" (20-62-101, et seq., M.C.A.)

Signature of Surveyor & Seal

Date: 2/5/2009 Reg. No. 9750LS

Employer: U. S. Forest Service

Sec. 4



Office of Clerk and Recorder, County of Lincoln

230222 BOOK: CCR CC&R'S PAGE: 11740 Pages: 1
STATE OF MONTANA LINCOLN COUNTY
RECORDED: 12/14/2010 11:52 KOI: CC&R'S
TAMMY D. LAUER CLERK AND RECORDER
FEE: \$0.00 BY: Jeannie Leung
TO: FILED

Cross Index No. A-13 T. 33N.R. 34W. P.M., MT

Adopted July 1, 1981, Montana Board of Professional Engineers & Land Surveyors

● corner this sheet