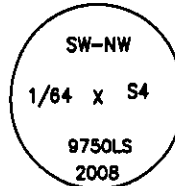


CERTIFIED CORNER RECORDATION

Corner SW-NW 1/64 S4 T. 33 N. R. 34 W. P.M.M. LINCOLN County

- I. No previous history.  
II. No evidence found.  
III. At the position determined by survey, set a 5/8 in. diam., 24 ins. long rebar, 23 ins. in the ground with a 3 1/4 in. diam. aluminum cap marked as shown.

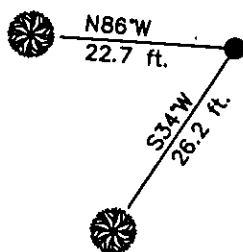


From which the new bearing trees:

- A fir, 10 ins. diam, bears S34°W, 26.2 ft. dist., mkd. SWNW 1/64 S4 BT.  
A fir, 4 ins. diam, bears N86°W, 22.7 ft. dist., mkd. "X" BT.

Painted red the scribed faces and 6 in. red bands around the bearing trees. Attached Land Survey Monument and Bearing Tree signs. Set a 6 ft. galvanized steel guard post 3 ft. South and East with Property Boundary and Land Survey Monument decals attached.

Date of Fieldwork: 7/15/2008  
Survey crew: Steve Boyer, Tom Hommel  
Magnetic declination: 20° East assumed  
Equipment used: Hand compass and loggers tape  
U.S. Forest Service, Supervisors Office, 31374 Hwy. 2, Libby, MT 59923 (406) 293-6211



SKETCH OF CORNER

NOT TO SCALE

CERTIFICATION

I, Thomas M. Hommel 10800LS  
certify the information shown herein is true and correct.

Thomas M. Hommel  
Signature Ground Party Chief

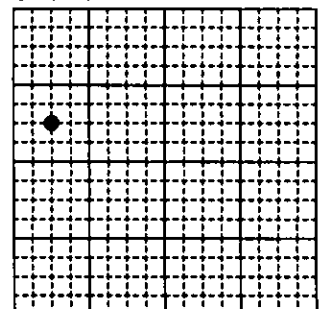
I, Steven A. Boyer  
certify that this Corner Record correctly represents work performed by me or under my direction in compliance with the "Corner Recordation Act" (70-22-101, et seq., M.C.A.)

Steven A. Boyer  
Signature of Surveyor & Seal

Date: 2/10/2009 Reg. No. 9750LS

Employer: U. S. Forest Service

Sec. 4



•corner this sheet

Office of Clerk and Recorder, County of Lincoln

230221 BOOK: CCR CC&R'S PAGE: 11739 Pages: 1  
STATE OF MONTANA LINCOLN COUNTY  
RECORDED: 12/14/2010 11:50 KOI: CC&R'S  
TAMMY D. LAUER CLERK AND RECORDER  
FEE: \$0.00 BY: Deanne Deane  
TO: FILED

Cross Index No. B.5-9.5 T. 33N. R. 34W. P.M., MT

Adopted July 1, 1981, Montana Board of Professional Engineers & Land Surveyors