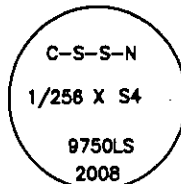


CERTIFIED CORNER RECORDATION

Corner C-S-S-N 1/256 S4 T. 33 N. R. 34 W. P.M.M. LINCOLN County

- I. No previous history.
- II. No evidence found.
- III. At the position determined by survey, set a 5/8 in. diam., 24 ins. long rebar, 23 ins. in the ground with a 3 1/4 in. diam. aluminum cap marked as shown.

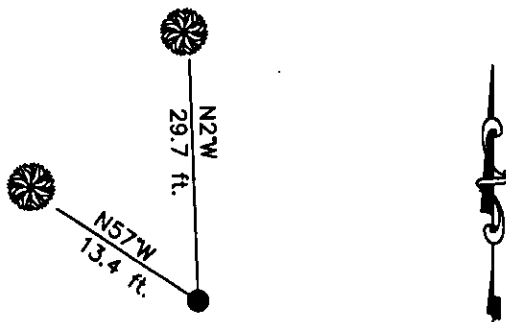


From which the new bearing trees:

- A fir, 12 ins. diam, bears N57°W, 13.4 ft. dist., mkd. CSSN 1/256 S4 BT.
- A fir, 7 ins. diam, bears N2°W, 29.7 ft. dist., mkd. "X" BT.

Painted red the scribed faces and 6 in. red bands around the bearing trees. Attached Land Survey Monument and Bearing Tree signs. Set a 6 ft. galvanized steel guard post 3 ft. North and West with Property Boundary and Land Survey Monument decals attached.

Date of Fieldwork: 7/14/2008
 Survey crew: Steve Boyer, Tom Hommel
 Magnetic declination: 20° East assumed
 Equipment used: Hand compass and loggers tape
 U.S. Forest Service, Supervisors Office, 31374 Hwy. 2, Libby, MT 59923 (406) 293-6211



SKETCH OF CORNER

NOT TO SCALE

CERTIFICATION

I, Thomas M. Hommel 10800LS
 certify the information shown herein is true and correct.

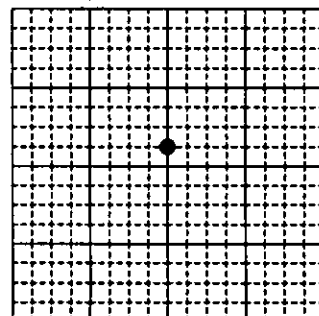
Thomas M. Hommel
 Signature Ground Party Chief

I, Steven A. Boyer
 certify that this Corner Record correctly represents work performed by me or under my direction in compliance with the "Corner Recordation Act" (20-22-101, et seq., M.C.A.)

Steven A. Boyer
 Signature of Surveyor & Reg.

Date: 2/11/2009 Reg. No. 9750LS
 Employer: U. S. Forest Service

Sec. 4



● corner this sheet

Office of Clerk and Recorder, County of Lincoln

230220 BOOK: CCR CC&R'S PAGE: 11738 Pages: 1
 STATE OF MONTANA LINCOLN COUNTY
 RECORDED: 12/14/2010 11:48 KOI: CC&R'S
 TAMMY D. LAUER CLERK AND RECORDER
 FEE: \$0.00 BY: Leanne Lauer
 TO: FILED

Cross Index No. B.75-11 T. 33N. R. 34W. P.M., MT

Adopted July 1, 1981, Montana Board of Professional Engineers & Land Surveyors