

CERTIFIED CORNER RECORDATION

Corner C 1/4 S5 T. 33 N. R. 34 W. P.M.M. LINCOLN County

- I. 1982 Certificate of Survey No. 1047 by Jack H. Ninneman, MT Reg. No. 4661S: Sets a 5/8" diam. by 24" long capped steel pin marked J.H.N. 4661S for the C 1/4 sec. corner Section 5, T33N, R34W
- II. Found, a 5/8" diam. rebar, 8" above ground with a broken yellow plastic cap marked J.H.N. 4661S. From which:
- A pine, 5 ins. diam, bears S80°E, 7.8 ft. dist., mkd. C 1/4 S5 BT.
A larch, 8 ins. diam, bears S32°W, 1.0 ft. dist., mkd. with a healed face.

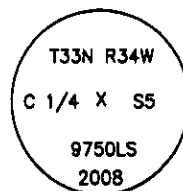
- III. I do not accept the position of the found rebar for the C 1/4 of sec. 5. At the position determined by survey, set a 2 1/2 in. diam. by 30 ins. long aluminum pipe, 22 ins. in the ground with a 3 1/4 in. diam. aluminum cap marked as shown, from which the new bearing trees:
- A fir, 5 ins. diam, bears S78°W, 29.0 ft. dist., mkd. T33N R34W C 1/4 S5 BT.
A fir, 9 ins. diam, bears N38°W, 16.4 ft. dist., mkd. T33N R34W C 1/4 S5 BT.

the Ninneman bearing trees:

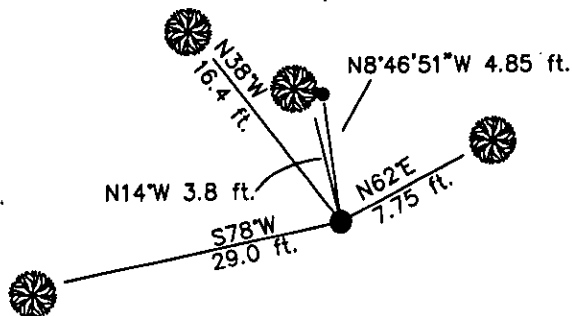
- A pine, 5 ins. diam, bears N62°E, 7.75 ft. dist., mkd. C 1/4 S5 BT.
A larch, 8 ins. diam, bears N14°W, 3.8 ft. dist., mkd. with a healed face.

the Ninneman rebar bears N08°46'51"W, 4.85 ft.

Painted red the scribed faces and 6 in. red bands around the bearing trees. Attached Land Survey Monument and Bearing Tree signs. Set a 6 ft. galvanized steel guard post 3 ft. South with Property Boundary and Land Survey Monument decals attached.



Date of Fieldwork: 7/14/2008
Survey crew: Steve Boyer, Tom Hommel
Magnetic declination: 20° East assumed
Equipment used: Hand compass and loggers tape
U.S. Forest Service, Supervisors Office, 31374 Hwy. 2, Libby, MT 59923 (406) 293-6211



SKETCH OF CORNER

NOT TO SCALE

CERTIFICATION

I, Thomas M. Hommel 10800LS
certify the information shown herein is true and correct.

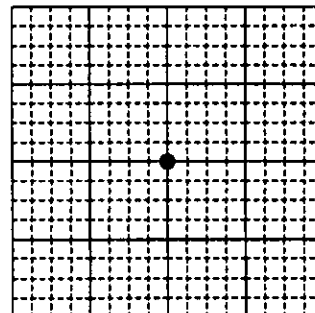
Thomas M. Hommel
Signature Ground Party Chief

I, Steven A. Boyer
certify that this Corner Record correctly represents work performed by me or under my direction in compliance with the "Corner Recordation Act" 2005-22-101, et seq., M.C.A.

Steven A. Boyer
Signature of Surveyor & Seal

Date: 2/11/2009 Reg. No. 9750LS
Employer: U. S. Forest Service

Sec. 5



Office of Clerk and Recorder, County of Lincoln

230219 BOOK: CCR CC&R'S PAGE: 11737 Pages: 1
STATE OF MONTANA LINCOLN COUNTY
RECORDED: 12/14/2010 11:47 KOI: CC&R'S
TAMMY D. LAUER CLERK AND RECORDER
FEE: \$0.00 BY: Debbie Stearns
TO: FILED

Cross Index No. C-07 T. 33N. R. 34W. P.M., MT

Adopted July 1, 1981, Montana Board of Professional Engineers & Land Surveyors

● corner this sheet