

CERTIFIED CORNER RECORDATION

Corner WE 1/64 ³³ 4 T. 33 N. R. 34 W. P.M.M. LINCOLN County

- I. 1981 Certified Corner Recordation by Thomas C. Hill, MT Reg. No. 5612S: At the determined corner point: Set a 2 1/2"X30" alum. pipe appr. 15" in the ground, collar of stone. Alum. cap mrk. as shown

From which:

- A 4" pine bears S06°E, 12.0 ft. Mrk.: "X BT".
A 10" western larch bears N23°W, 29.3 ft. Mrk.: "1/64S33BT".

Attached location poster to a 4" pine which bears N02°E, 5.7 ft.
Bearings taken to center of tree, distance measured to nail at base of tree.
Painted red bands around Bt's, and attached BT signs.



- II. Found a 2 1/2 in. diam. aluminum pipe, 8 ins. above the ground, firmly set with a 3 1/4 in. diam. aluminum cap marked as shown above, from which:

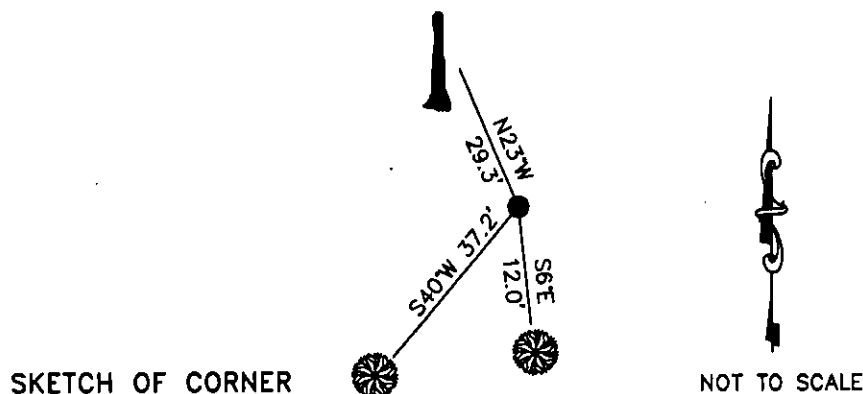
- A pine snag, bears S6°E, 12.0 ft. dist., mkd. X BT.
A larch, 11 ins. diam, bears N23°W, 29.3 ft. dist., mkd. with a healed face.

- III. Established 1 new bearing tree:

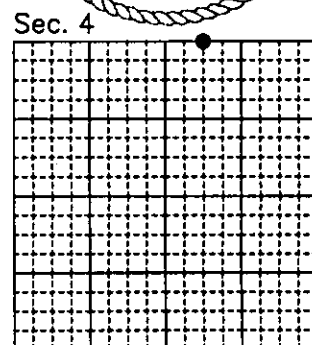
A larch, 13 ins. diam, bears S40°W, 37.2 ft. dist., mkd. WE 1/64 S4 BT.

Painted red the scribed faces and 6 in. red bands on the bearing trees. Attached Land Survey Monument and Bearing Tree signs. Set a 6 ft. galvanized steel guard post 3 ft. South and East, with Land Survey Monument and Property Boundary decals attached.

Date of Fieldwork: 5/8/2008
Survey crew: Steve Boyer, Tom Hommel
Magnetic declination: 20° East assumed
Equipment used: Hand compass and loggers tape
U.S. Forest Service, Supervisors Office, 31374 Hwy. 2, Libby, MT 59923 (406) 293-6211



CERTIFICATION
I, Thomas M. Hommel 10800LS
certify the information shown herein is true and correct.
Signature Ground Party Chief
I, Steven A. Boyer
certify that this Corner Record correctly represents work performed by me or under my direction in compliance with the "Corner Recordation Act" (70-22-101, et seq., M.C.A.)
Signature of Surveyor & Seal
Date: 2/5/2009 Reg. No. 9750LS
Employer: U. S. Forest Service



Office of Clerk and Recorder, County of Lincoln

230217 BOOK: CCR CC&R'S PAGE: 11735 Pages: 1
STATE OF MONTANA LINCOLN COUNTY
RECORDED: 12/14/2010 11:43 KOI: CC&R'S
TAMMY D. LAUER CLERK AND RECORDER
FEE: \$0.00 BY: [Signature]
TO: FILED

Cross Index No. A-11.5 T. 33N. R. 34W. P.M., MT

Adopted July 1, 1981, Montana Board of Professional Engineers & Land Surveyors

● corner this sheet