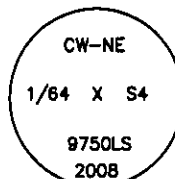


CERTIFIED CORNER RECORDATION

Corner CW-NE 1/256 S4 T. 33 N. R. 34 W. P.M.M. LINCOLN County

- I. No previous history.
- II. No evidence found.
- III. At the position determined by survey, set a 5/8 in. diam., 24 ins. long rebar, 22 ins. in the ground with a 3 1/4 in. diam. aluminum cap marked as shown.



From which the new bearing trees:

- A larch, 5 ins. diam, bears N87°W, 30.3 ft. dist., mkd. "X" BT.
- A larch, 6 ins. diam, bears N51°W, 15.1 ft. dist., mkd. CWNE 1/64 S4 BT.

Painted red the scribed faces and 6 in. red bands around the bearing trees. Attached Land Survey Monument and Bearing Tree signs. Set a 6 ft. galvanized steel guard post 3 ft. North and West with Property Boundary and Land Survey Monument decals attached.

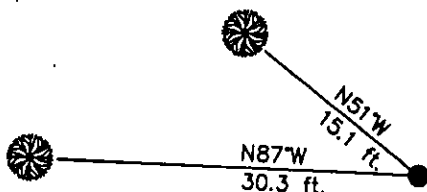
Date of Fieldwork: 7/15/2008

Survey crew: Steve Boyer, Tom Hommel

Magnetic declination: 20° East assumed

Equipment used: Hand compass and loggers tape

U.S. Forest Service, Supervisors Office, 31374 Hwy. 2, Libby, MT 59923 (406) 293-6211



SKETCH OF CORNER

NOT TO SCALE

CERTIFICATION

I, Thomas M. Hommel 10800LS
certify the information shown herein is true and correct.

[Signature]
Signature Ground Party Chief

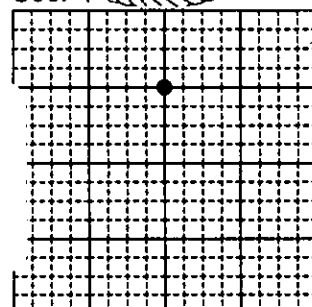
I, Steven A. Boyer
certify that this Corner Record correctly represents work performed by me or under my direction in compliance with the "Corner Recordation Act" (70-22-101, et seq., M.C.A.)

[Signature] STEVEN A. BOYER
Signature of Surveyor & Seal

Date: 2/10/2009 Reg. No. 9750LS

Employer: U. S. Forest Service

Sec. 4



●corner this sheet

Office of Clerk and Recorder, County of Lincoln

230215 BOOK: CCR CC&R'S PAGE: 11733 Pages: 1

STATE OF MONTANA LINCOLN COUNTY

RECORDED: 12/14/2010 11:40 KOI: CC&R'S

TAMMY D. LAUER CLERK AND RECORDER

FEE: \$0.00

TO: FILED

Cross Index No. B-11.5 T. 33N. R. 34W. P.M., MT

Adopted July 1, 1981, Montana Board of Professional Engineers & Land Surveyors