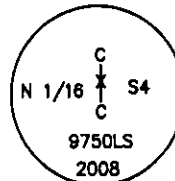


# CERTIFIED CORNER RECORDATION

Corner CN 1/16 S4 T. 33 N. R. 34 W. P.M.M. LINCOLN County

- I. No previous history.
- II. No evidence found.
- III. At the position determined by survey, set a 5/8 in. diam., 24 ins. long rebar, 22 ins. in the ground with a 3 1/4 in. diam. aluminum cap marked as shown:

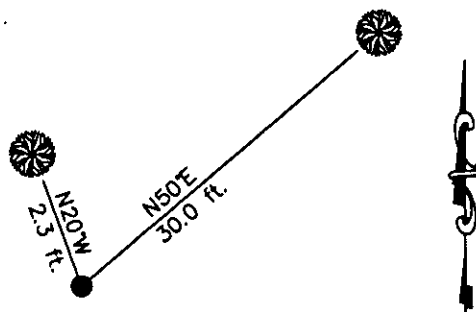


From which the new bearing trees:

- A larch, 7 ins. diam, bears N50°E, 30.0 ft. dist., mkd. CN 1/16 S4 BT.
- A fir, 9 ins. diam, bears N20°W, 2.3 ft. dist., mkd. CN 1/16 S4 BT.

Painted red the scribed faces and 6 in. red bands around the bearing trees. Attached Land Survey Monument and Bearing Tree signs. Set a 6 ft. galvanized steel guard post 3 ft. North and East with Property Boundary and Land Survey Monument decals attached.

Date of Fieldwork: 7/15/2008  
 Survey crew: Steve Boyer, Tom Hommel  
 Magnetic declination: 20° East assumed  
 Equipment used: Hand compass and loggers tape  
 U.S. Forest Service, Supervisors Office, 31374 Hwy. 2, Libby, MT 59923 (406) 293-6211



SKETCH OF CORNER

NOT TO SCALE

## CERTIFICATION

I, Thomas M. Hommel 10800LS  
 certify the information shown herein is true and correct.

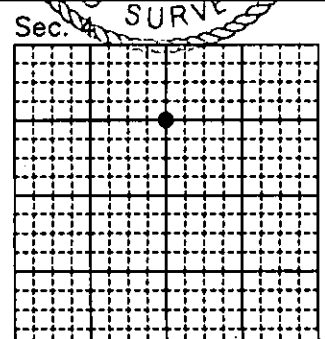
*[Signature]*  
 Signature Ground Party Chief

I, Steven A. Boyer  
 certify that this Corner Record correctly represents work performed by me or under my direction in compliance with the "Corner Recordation Act" (70-22-101, et seq., M.C.A.)

*[Signature]*  
 Signature of Surveyor & Seal

Date: 2/10/2009 Reg. No. 9750LS50LS

Employer: U. S. Forest Service



Office of Clerk and Recorder, County of Lincoln

230214 BOOK: CCR CC&R'S PAGE: 11732 Pages: 1  
 STATE OF MONTANA LINCOLN COUNTY  
 RECORDED: 12/14/2010 11:38 KOI: CC&R'S  
 TAMMY D. LAUER CLERK AND RECORDER  
 FEE: \$0.00 BY: *[Signature]*  
 TO: FILED

Cross Index No. B-11 T. 33N. R. 34W. P.M., MT

Adopted July 1, 1981, Montana Board of Professional Engineers & Land Surveyors

● corner this sheet