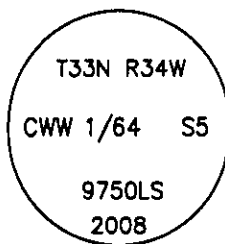


CERTIFIED CORNER RECORDATION

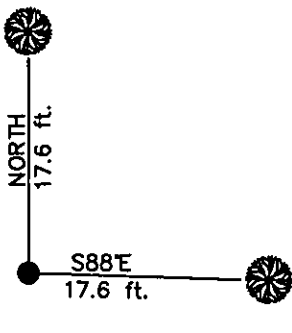
Corner CWW 1/64 S5 T 33 N. R. 34 W. P.M.M. LINCOLN County

- I. No previous survey. Not previously set.
- II. No evidence found.
- III. At the position determined by survey, set a 5/8" diam. by 24" long rebar, 21" in the ground with a 3 1/4" diam. aluminum cap marked as shown, from which:
- A fir, 5 ins. diam, bears S88°E, 17.6 ft. dist., mkd. "X" BT.
- A fir, 9 ins. diam, bears NORTH, 17.6 ft. dist., mkd. CWW 1/64 S5 BT.

Painted red the scribed faces and 6 in. red bands around the bearing trees. Attached Land Survey Monument and Bearing Tree signs. Set a 6 ft. galvanized steel guard post 3 ft. South with Property Boundary and Land Survey Monument decals attached.



Date of Fieldwork: 8/21/2008
Survey crew: Steve Boyer, Tom Hommel
Magnetic declination: 20' East assumed
Equipment used: Hand compass and loggers tape
U.S. Forest Service, Supervisors Office, 31374 Hwy. 2, Libby, MT 59923 (406) 293-6211



SKETCH OF CORNER

NOT TO SCALE

CERTIFICATION

I, Thomas M. Hommel 10800LS
certify the information shown herein is true and correct.

Thomas M. Hommel
Signature Ground Party Chief

I, Steven A. Boyer
certify that this Corner Record correctly represents work performed by me or under my direction in compliance with the "Corner Recordation Act" (70-22-101, et seq., M.C.A.) A.

Steven A. Boyer
Signature of Surveyor & Seal

Date: 2/11/2009 Reg. No. 9750LS

Employer: U. S. Forest Service

MONTANA
BOYER
9750LS
REGISTERED
SURVEYOR

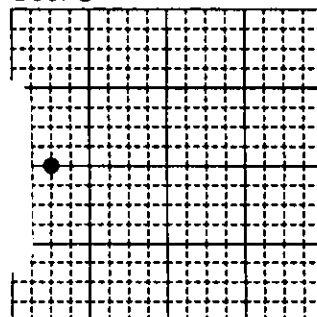
Office of Clerk and Recorder, County of Lincoln

Sec. 5

230212 BOOK: CCR CC&R'S PAGE: 11730 Pages: 1
STATE OF MONTANA LINCOLN COUNTY
RECORDED: 12/14/2010 11:35 KOI: CC&R'S
TAMMY D. LAUER CLERK AND RECORDER
FEE: \$0.00 BY: Clarence Lauer
TO: FILED

Cross Index No. C-5.5 T. 33N. R. 34W. P.M., MT

Adopted July 1, 1981, Montana Board of Professional Engineers & Land Surveyors



● corner this sheet