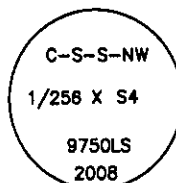


CERTIFIED CORNER RECORDATION

Corner C-S-S-NW 1/256 S4 T. 33 N. R. 34 W. P.M.M. LINCOLN County

- I. No previous history.
- II. No evidence found.
- III. At the position determined by survey, set a 5/8 in. diam., 24 ins. long rebar, 23 ins. in the ground with a 3 1/4 in. diam. aluminum cap marked as shown.



From which the new bearing trees:

- A fir, 10 ins. diam, bears N18°E, 34.8 ft. dist., mkd. CSSNW 1/256 S4 BT.
- A fir, 6 ins. diam, bears N62°E, 37.9 ft. dist., mkd. "X" BT.

Painted red the scribed faces and 6 in. red bands around the bearing trees. Attached Land Survey Monument and Bearing Tree signs. Set a 6 ft. galvanized steel guard post 3 ft. North and East with Property Boundary and Land Survey Monument decals attached.

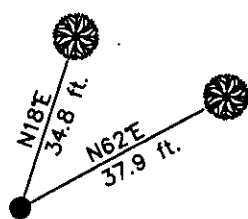
Date of Fieldwork: 7/14/2008

Survey crew: Steve Boyer, Tom Hommel

Magnetic declination: 20° East assumed

Equipment used: Hand compass and loggers tape

U.S. Forest Service, Supervisors Office, 31374 Hwy. 2, Libby, MT 59923 (406) 293-6211



SKETCH OF CORNER

NOT TO SCALE

CERTIFICATION

Thomas M. Hommel 10800LS
I certify the information shown herein is true and correct.

Signature Ground Party Chief

Steven A. Boyer

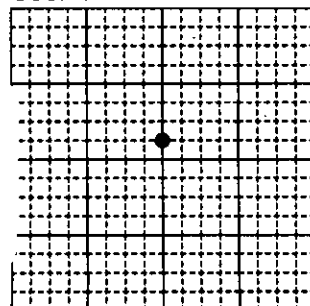
I certify that this Corner Record correctly represents work performed by me or under my direction in compliance with the "Corner Recordation Act" (70-22-101, et seq., M.C.A.)

Signature of Surveyor & Seal

Date: 2/11/2009 Reg. No. 9750LS

Employer: U. S. Forest Service

Sec. 4



● corner this sheet

Office of Clerk and Recorder, County of Lincoln

230210 BOOK: CCR CC&R'S PAGE: 11728 Pages: 1

STATE OF MONTANA LINCOLN COUNTY

RECORDED: 12/14/2010 11:32 KOI: CC&R'S

TAMMY D. LAUER CLERK AND RECORDER

FEE: \$0.00

TO: FILED

BY: *Jeannie Skene*
Deputy

Cross Index No. B.75-11 T. 33N. R. 34W. P.M., MT

Adopted July 1, 1981, Montana Board of Professional Engineers & Land Surveyors