

CERTIFIED CORNER RECORDATION

Corner CNSSW 1/256 S5 T. 33 N. R. 34 W. P.M.M. Lincoln County

I. Record: None

II. Found: No record monuments found.

III. Perpetuation: At the corner point, determined by survey, set a 5/8 ins. diam. steel rebar 24 ins. long, 23 ins. in the ground, with a 3 1/4 ins. diam. U.S.F.S Aluminum cap marked as shown below from which:

A Larch, 12 ins. diam., bears N6° W, 10.90 ft. dist., scribed 1/256 S5 BT.

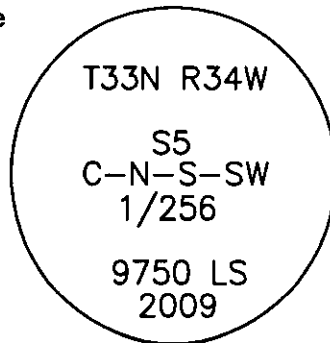
A Pine, 13 ins. diam., bears S20°E, 12.20 ft. dist., scribed 1/256 S5 BT.

Painted faces and 6 in. wide red bands to all bearing trees and attached Land Survey Monument and Bearing Tree signs.

Set steel posts on line 2 ft. South and 3 ft. West of set monument with attached Survey Monument and Property Line stickers.

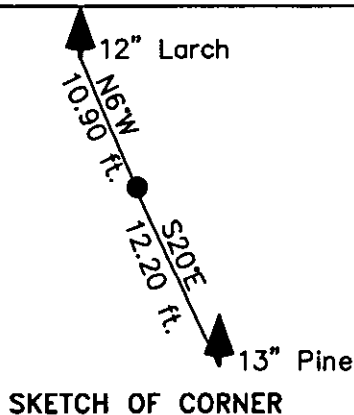
Magnetic declination: 18° East

Equipment used: Hand compass and loggers tape



Kootenai Surveyors Inc., 314 California Av., Libby, MT. 59923 (406) 293-4354

Pine Creek 2009



CERTIFICATION

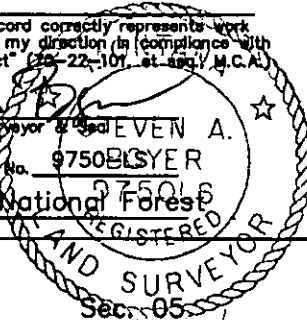
I, Kelly Rooney
certify the information shown herein is true and correct.
Kelly Rooney
Signature Ground Party Chief

I, Steven Boyer
certify that this Corner Record correctly represents work performed by me or under my direction in compliance with the "Corner Recordation Act" (39-22-101 et seq.) M.C.A.

Steven A. Boyer
Signature of Surveyor & Seal

Date: 12/01/2009 Reg. No. 9750LS

Employer: Kootenai National Forest



Office of Clerk and Recorder, County of Lincoln This "corner

record" was filed for record on 224331 BOOK: CCR CC&R'S PAGE: 11440 Pages: 1

was noted on the cross STATE OF MONTANA LINCOLN COUNTY

book No. RECORDED: 02/04/2010 2:07 KOI: CC&R'S

TAMMY D. LAUER CLERK AND RECORDER

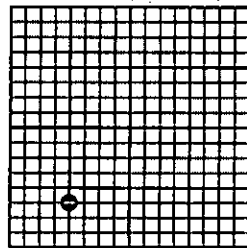
FEE: \$0.00

BY: Steven A. Boyer

TO: STEVE BOYER-SURVEYOR US FOREST SERVICE,

Cross Index No. D.25-6 T. 33N R. 34W P.M., MT

Adopted July 1, 1981, Montana Board of Professional Engineers & Land Surveyors



• corner this sheet