

CERTIFIED CORNER RECORDATION

Corner NENW 1/64 S5 T. 33 N. R. 34 W. P.M.M. Lincoln County

- I. Record: 1997 "Baker Acres", P.F. Plat No. 5938 Lincoln County Records, by Marquardt Surveying.
- II. Found: A 5/8 diam. rebar with plastic cap stamped MARQUARDT 7329S, which bears N08°36'11"W, 11.02 ft. dist. from the corner point determined by survey. Not accepted this survey.
- III. Perpetuation: At the corner point, determined by survey, set a 5/8 ins. diam. steel rebar 24 ins. long, 22 ins. in the ground, with a 3 1/4 ins. diam. U.S.F.S Aluminum cap marked as shown below from which:

A Larch, 24 ins. diam., bears S53° E, 7.45 ft. dist., scribed NENW 1/64 S5 BT.

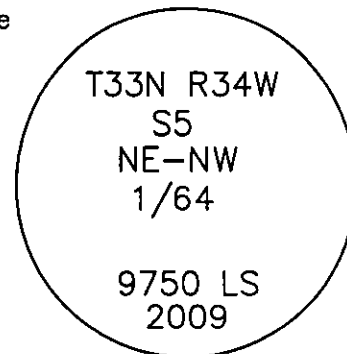
A Larch, 20 ins. diam., bears S78° W, 37.40 ft. dist., scribed NENW 1/64 S5 BT.

Painted faces and 6 in. wide red bands to all bearing trees and attached Land Survey Monument and Bearing Tree signs.

Set steel posts on line 3.0 ft. East and North of set monument with attached Survey Monument and Property Line stickers.

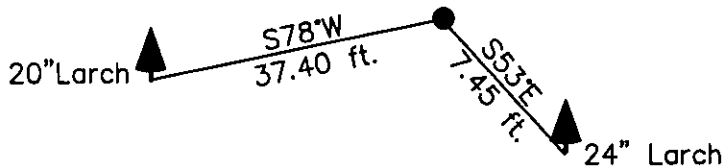
Magnetic declination: 18° East

Equipment used: Hand compass and loggers tape



Kootenai Surveyors Inc., 314 California Av., Libby, MT. 59923 (406) 293-4354

Pine Creek 2009



SKETCH OF CORNER

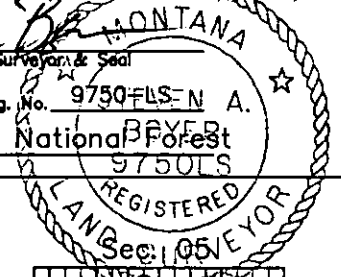
CERTIFICATION

I, Kelly Rooney
certify the information shown herein is true and correct.

Kelly Rooney
Signature Ground Party Chief

I, Steven Boyer
certify that this Corner Record correctly represents work performed by me or under my direction in compliance with the "Corner Recordation Act" (70-22-101, et seq., M.C.A.)

Steven Boyer
Signature of Surveyor & Seal
Date: 12/01/2009 Reg. No. 9750 FLS-N A.
Employer: Kootenai National Forest



Office of Clerk and Recorder, County of Lincoln This "corner

record" was filed for record or 224325 BOOK: CCR CC&R'S PAGE: 11434 Pages: 1
was noted on the cross-index STATE OF MONTANA LINCOLN COUNTY
book No. RECORDED: 02/04/2010 2:04 KOI: CC&R'S
TAMMY D. LAUER CLERK AND RECORDER
FEE: \$0.00 BY: Steven Boyer
TO: STEVE BOYER-SURVEYOR US FOREST SERVICE,

Cross Index No. A, S-6.5 T. 33N R. 34W P.M., MT

Adopted July 1, 1981, Montana Board of Professional Engineers & Land Surveyors

• corner this sheet