

CERTIFIED CORNER RECORDATION

Corner CENENW 1/256 S5 T 33 N. R. 34 W. P.M.M. Lincoln County

- I. Record: 1997 "Baker Acres", P.F. Plat No. 5938 Lincoln County Records, by Marquardt Surveying.
- II. Found: A 5/8 diam. rebar with plastic cap stamped MARQUARDT 7329S, which bears N09°09'48"W, 9.27 ft. dist. from the corner point determined by survey. Not accepted this survey.

- III. Perpetuation: At the corner point, determined by survey, set a 5/8 ins. diam. steel rebar 24 ins. long, 22 ins. in the ground, with a 3 1/4 ins. diam. U.S.F.S Aluminum cap marked as shown below from which:

A Larch, 18 ins. diam., bears S14° W, 43.75 ft. dist., scribed 1/256 S5 BT.

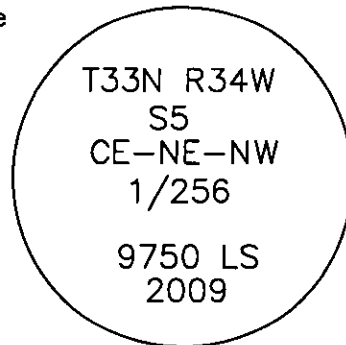
A Larch, 24 ins. diam., bears S80° W, 44.20 ft. dist., scribed 1/256 S5 BT.

Painted faces and 6 in. wide red bands to all bearing trees and attached Land Survey Monument and Bearing Tree signs.

Set steel posts on line 3.0 ft. West and South of set monument with attached Survey Monument and Property Line stickers.

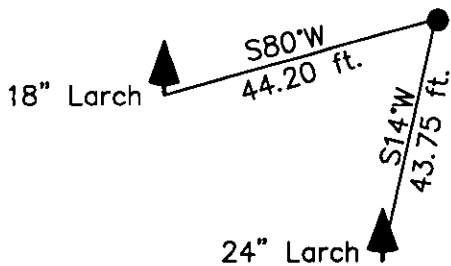
Magnetic declination: 18° East

Equipment used: Hand compass and loggers tape



Kootenai Surveyors Inc., 314 California Av., Libby, MT. 59923 (406) 293-4354

Pine Creek 2009



SKETCH OF CORNER

CERTIFICATION

I, Kelly Rooney
certify the information shown herein is true and correct.

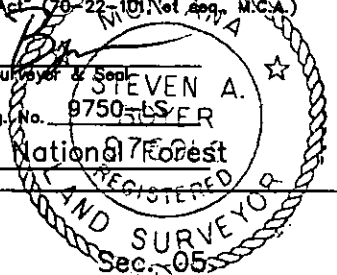
Kelly Rooney
Signature Ground Party Chief

I, Steven Boyer
certify that this Corner Record correctly represents work performed by me or under my direction in compliance with the "Corner Recordation Act" (76-22-101, Not App. M.C.A.)

Steven A. Boyer
Signature of Surveyor & Seal

Date: 12/01/2009 Reg. No. 9750-LS-ER

Employer: Kootenai National Forest



Office of Clerk and Recorder, County of Lincoln This "corner

record" was filed for record on 224324 BOOK: CCR CC&R'S PAGE: 11433 Pages: 1

was noted on the cross- STATE OF MONTANA LINCOLN COUNTY
book No. RECORDED: 02/04/2010 2:03 KOI: CC&R'S

TAMMY D. LAUER CLERK AND RECORDER

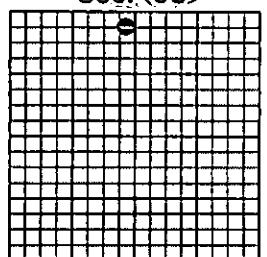
FEE: \$0.00

BY: Steven A. Boyer

TO: STEVE BOYER-SURVEYOR US FOREST SERVICE,

Cross Index No. A.5-6.75 T. 33N R. 34W P.M., MT

Adopted July 1, 1981, Montana Board of Professional Engineers & Land Surveyors



• corner this sheet