

# CERTIFIED CORNER RECORDATION

Corner WC SN 1/64 S5 T. 33 N. R. 34 W. P.M.M. Lincoln County

I. Record: None

II. Found: No record monuments found.

III. Perpetuation: The position for the SN1/64 corner on the west line of section 5 falls on the Montana/Idaho state boundary. Therefore I set for a witness corner to the SN1/64, a 5/8 ins. diam. steel rebar 24 ins. long, 22 ins. in the ground, with a 3 1/4 ins. diam. U.S.F.S Aluminum cap which bears N89°21'45"E, 5.00 feet dist, from the computed position and is marked as shown below from which:

A Pine, 18 ins. diam., bears N28° E, 71.85 ft. dist., scribed WC SN 1/64 S5 BT.

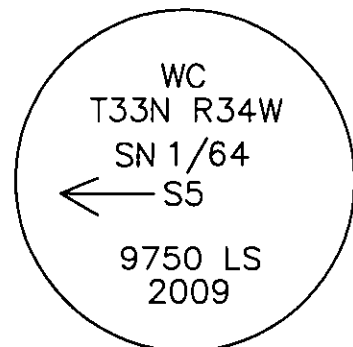
A Larch, 24 ins. diam., bears N78° E, 65.60 ft. dist., scribed WC SN 1/64 S5 BT.

Painted faces and 6 in. wide red bands to all bearing trees and attached Land Survey Monument and Bearing Tree signs.

Set steel posts on line 3.0 ft. East and North of set monument with attached Survey Monument and Property Line stickers.

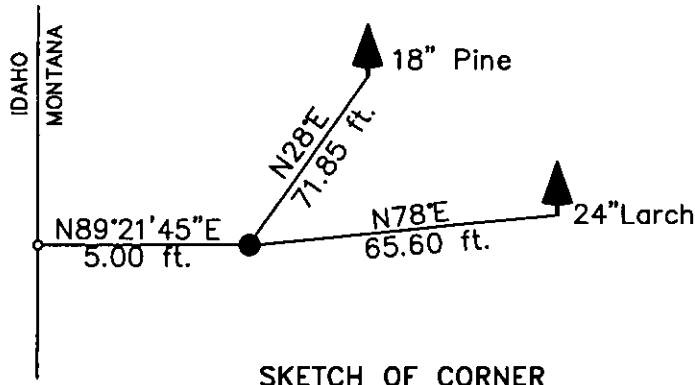
Magnetic declination: 18° East

Equipment used: Hand compass and loggers tape



Kootenai Surveyors Inc., 314 California Av., Libby, MT. 59923 (406) 293-4354

Pine Creek 2009



## CERTIFICATION

1. Kelly Rooney  
certify the information shown hereon is true and correct.  
*Kelly Rooney*  
Signature Ground Party Chief

2. Steven Boyer  
certify that this Corner Record correctly represents work performed by me or under my direction in compliance with the "Corner Recordation Act" (20-22-101 of sec. M.C.A.)  
*Steven A. Boyer*  
Signature of Surveyor & Seal  
Date: 12/01/2009 Reg. No. 9750-LSER  
Employer: Kootenai National Forest

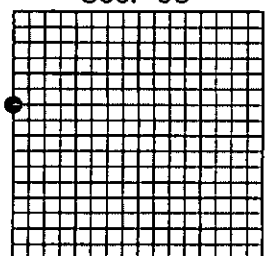
Office of Clerk and Recorder, County of Lincoln This "corner

record" was filed for record on 224323 BOOK: CCR CC&R'S PAGE: 11432 Pages: 1  
was noted on the cross-ind STATE OF MONTANA LINCOLN COUNTY  
book No. TAMMY D. LAUER CLERK AND RECORDER

FEE: \$0.00 BY: *Steve Boyer*  
TO: STEVE BOYER-SURVEYOR US FOREST SERVICE,

Cross Index No. B.5-5 T. 33N R. 34W P.M., MT

Adopted July 1, 1981, Montana Board of Professional Engineers & Land Surveyors



• corner this sheet