

CERTIFIED CORNER RECORDATION

Corner SEC. COR. S.26, 27, 34, 35

T. 33N. R. 34W., PMM

LINCOLN County

RECORD:

(1903) G.L.O., Set a granite stone 15"x10"x5", 10" in the ground for cor. of secs. 26, 27, 34 and 35 with 1 notch on S. and 2 notches on E. edges; from which A cedar 12" diam. bears N.22° E., 109 lks. mkd. T33N R34W S26 BT, A fir 14" diam. bears S.41° E., 55 lks., mkd. T33N R34W S35 BT, A cedar 10" diam., bears S.39° W., 21 lks. mkd. T33N R34W S34 BT, A hemlock 24" diam., bears N.21° W., 74 lks. mkd. T33N R34W S27 BT.

(1967), B.L.M. remonumentation, found 15" x 10" x 5" firmly set granite stone with 1 groove on the S. and 2 grooves on the E. faces, and witnessed by the remains of the original SW bearing tree. Set an Iron post, 30" long 2 1/2" diam., 24" in the ground with a brass cap.

(1993) Corner Recordation, found a 3 1/4" B.L.M. brass cap

(1995) Corner Recordation, found a 2 1/2" Iron pipe 2" above the ground, firmly set, with a 2 1/2" brass cap.

(1999) C.O.S. No. 2834, found 3 1/4" B.L.M. Brass cap dated 1967

FOUND:

A 3 1/4" B.L.M. brass cap on a 2 1/2" Iron pipe marked as shown below, from which were found the following references:

A 16" Cedar tree with visible scribing and BT tag bears, N59° E., 35.4',

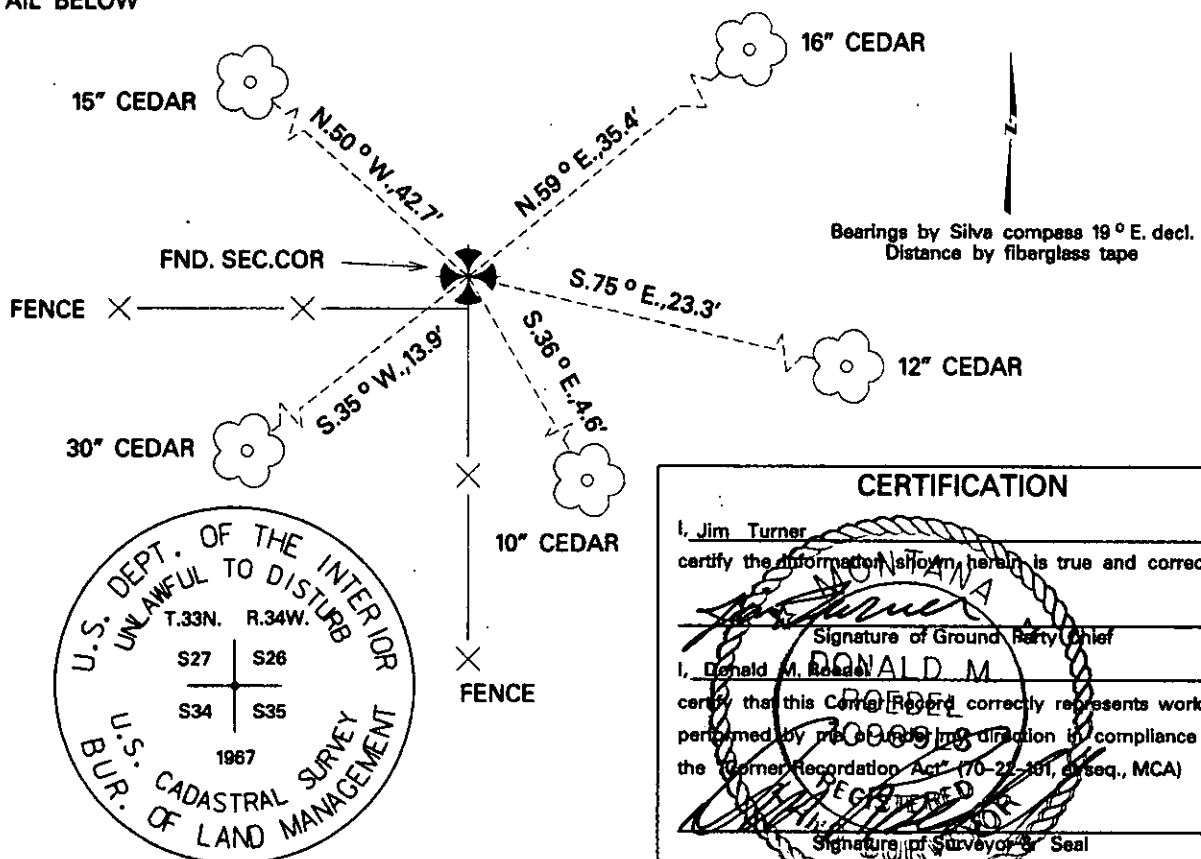
A 12" Cedar tree with visible scribing and a BT tag bears, S.75° E., 23.3',

A 10" Cedar tree with a location tag bears, S.36° E., 4.6',

A 30" Cedar tree with visible scribes in a well healed blaze and with a BT tag bears, S.35° W., 13.9',

A 15" Cedar tree with visible scribing and BT tag bears N.50° W., 42.7',

SEE DETAIL BELOW



SKETCH OF CORNER

Office of Clerk and Recorder, County of LINCOLN . This "corner

record" was filed for record on 4-15-03

was noted on the cross-index plat, and is assigned Page No. 10608, in Book No.

Coral M. Cummings by J.R.
County Official

Sec. 35			

• - Corner this sheet